

| | | | |
|----------|---------|----------|------|
| LOC I-UR | APP CRS | Rwy Idg | 6500 |
| 111.1 | 176° | TDZE | 414 |
| | | Apt Elev | 425 |

ILS or LOC RWY 18
ROSCOE TURNER (CRX)

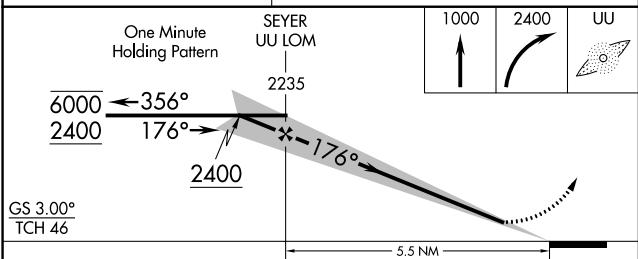
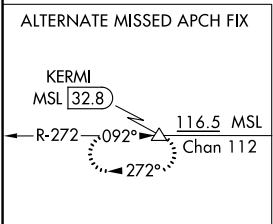
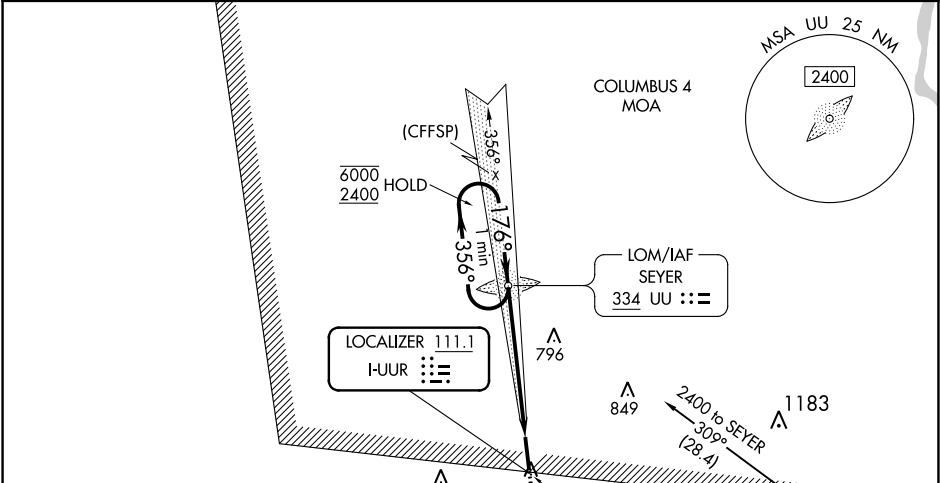
ADF required. DME required.

When local altimeter setting not received, use Selmer altimeter setting and increase S-ILS 18 DA to 682 and all MDAs 80 feet and increase S-LOC 18 Cat C/D visibility to 1½ SM, Circling Cat C to 2 SM, Cat D to 2¾ SM. For inop ALS when using Selmer altimeter setting, increase S-ILS 18 all Cats visibility to ¾ SM. Autopilot coupled approach NA below 1040.

MALSR

MISSED APPROACH:
Climb to 1000 then climbing right turn to 2400 direct UU LOM and hold.

| | | |
|---------------------|--------------------------------|--------------------------|
| AWOS-3PT 118.675 | MEMPHIS CENTER 135.9 273.55 | UNICOM 122.8 (CTAF) 0 |
|---------------------|--------------------------------|--------------------------|



| CATEGORY | A | B | C | D |
|----------|--------|-------------|-------------|--------------|
| S-ILS 18 | | 614-½ | 200 (200-½) | |
| S-LOC 18 | 1020-½ | 606 (600-½) | 1020-1¾ | 606 (600-1¾) |
| CIRCLING | 1020-1 | 595 (600-1) | 1080-1¾ | 1160-2¼ |

