

WAAS CH <b>53335</b> <b>W35A</b>	APP CRS <b>350°</b>	Rwy Idg <b>4519</b> TDZE <b>574</b> Apt Elev <b>574</b>
--	------------------------	---

RNAV (GPS) RWY 35

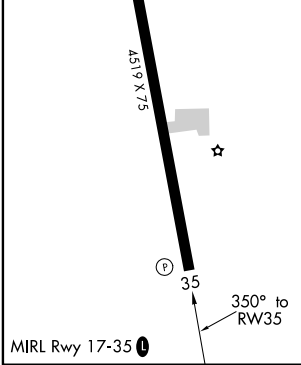
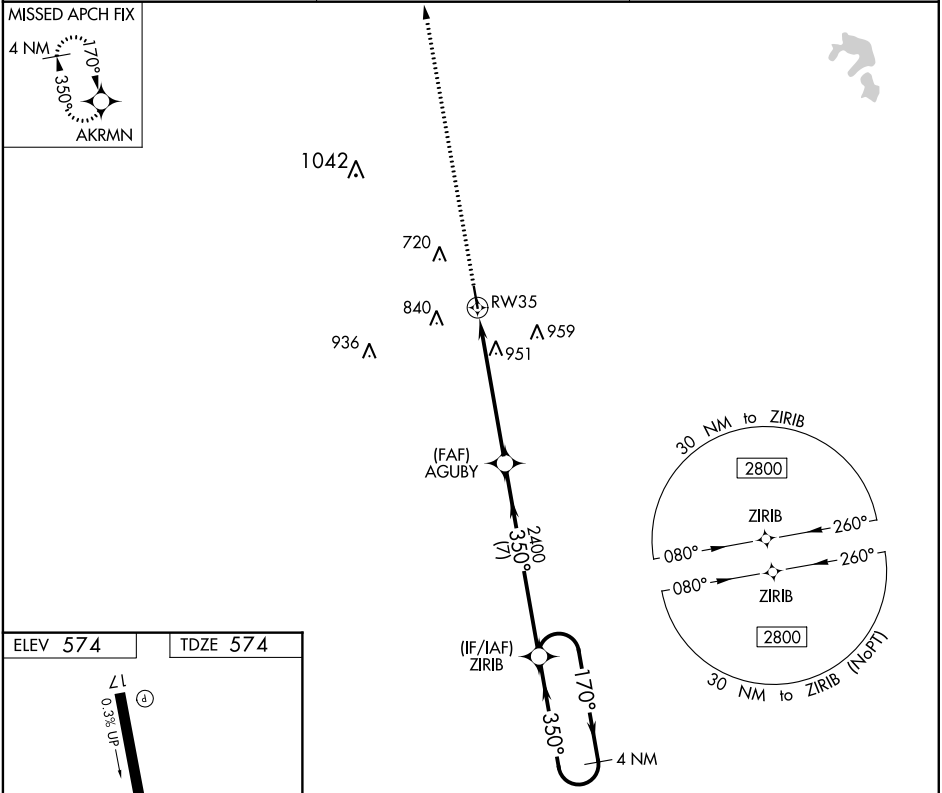
LOUISVILLE WINSTON COUNTY (LMS)

NA

Baro-VNAV NA. DME/DME RNP-0.3 NA. Use Philadelphia Muni altimeter setting; when not received, use George M Bryan altimeter setting and increase all LPV DA to 905 feet and LNAV/VNAV DA to 1383 feet; increase all MDA 20 feet and Circling Cats C/D visibility ¼ mile. Helicopter visibility reduction below 1 SM NA.

MISSED APPROACH:  
Climb to 2800 direct  
AKRMN and hold.

MPE AWOS-3P <b>118.725</b>	MEMPHIS CENTER <b>132.75 350.25</b>	UNICOM <b>122.7 (CTAF) 0</b>
-------------------------------	--	---------------------------------



2800	AKRMN	VGSI and RNAV glidepath not coincident (VGSI Angle 3.75/TCH 52).		ZIRIB	4 NM Holding Pattern
		AGUBY			
	RW35	2400	350°	170°	2800
		2400	350°		GP 3.00° TCH 40
		5.7 NM	7 NM		
CATEGORY	A	B	C	D	
LPV DA	889-1 $\frac{1}{8}$		315 (400-1 $\frac{1}{8}$ )		
LNAV/VNAV DA	1367-3		793 (800-1)		
LNAV MDA	1280-1	706 (800-1)		1280-2	706 (800-2)
CIRCLING	1280-1 706 (800-1)	1320-1 746 (800-1)	1380-2 $\frac{1}{4}$ 806 (900-2 $\frac{1}{4}$ )	1380-2 $\frac{1}{2}$ 806 (900-2 $\frac{1}{2}$ )	

SC-4, 03 DEC 2020 to 31 DEC 2020

SC-4, 03 DEC 2020 to 31 DEC 2020