

WAAS
CH **86942**
W18A

APP CRS
184°

Rwy Idg
TDZE
Apt Elev
5003
39
39

RNAV (GPS) RWY 18

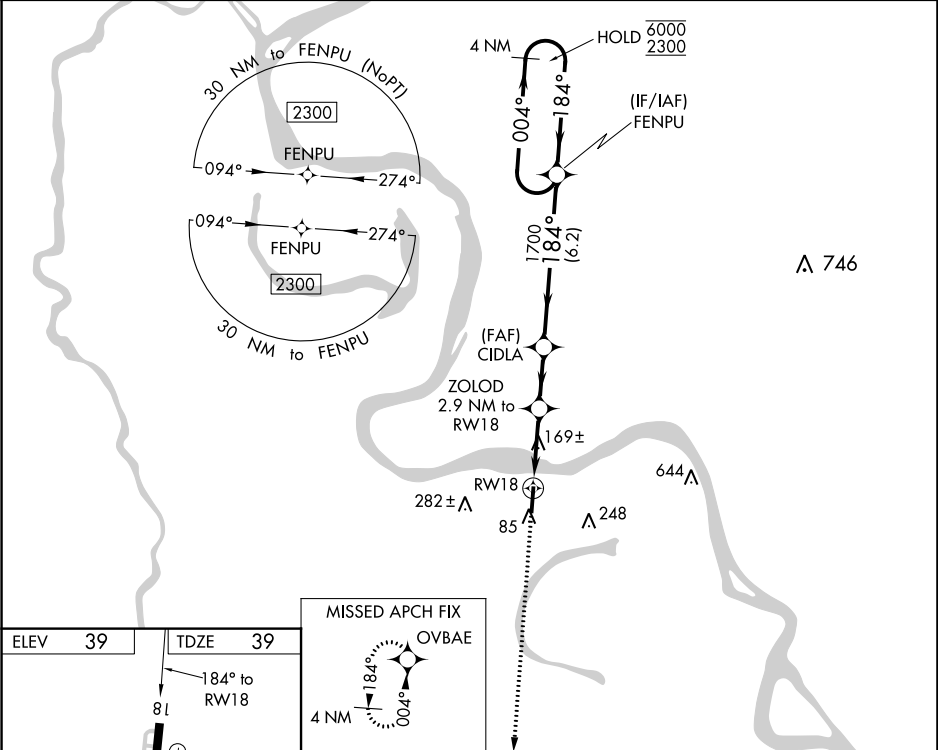
FALSE RIVER RGNL (HZR)

RNP APCH.

▼ Rwy 18 helicopter visibility reduction below ¾ SM NA. When local altimeter setting not received, use Baton Rouge altimeter setting and increase all DA 51 feet and all visibility ⅛ SM; increase all MDA 60 feet, and LNAV Cat C/D and Circling Cat C visibility ¼ SM. For uncompensated Baro-VNAV systems, LNAV/VNAV NA below -15°C or above 54°C. Baro-VNAV and VDP NA when using Baton Rouge altimeter setting.

MISSED APPROACH:
Climb to 2100 direct
OVBAE and hold.

AWOS-3PT 121.250	BATON ROUGE APP CON★ 120.3 278.3	UNICOM 122.8 (CTAF) 0
----------------------------	--	---------------------------------



ELEV 39 TDZE 39

81 184° to RWY 18

5003 x 75

36 MIRL Rwy 18-36 REIL Rwy 18

MISSED APCH FIX

OVBAE

4 NM

2100 OVBAE

*LNAV only.

1 NM to RWY 18

2.9 NM to RWY 18

CIDLA

1700

184°

1700

1000*

1 NM 1.9 NM 2.2 NM 6.2 NM

4 NM Holding Pattern

FENPU

004° 6000 184° 2300

GP 3.00° TCH 50

CATEGORY	A	B	C	D
LPV DA	347-7/8 308 (400-7/8)			
LNAV/VNAV DA	317-7/8 278 (300-7/8)			
LNAV MDA	420-1 381 (400-1)		420-1½ 381 (400-1½)	
CIRCLING	480-1 441 (500-1)	520-1 481 (500-1)	600-1½ 561 (600-1½)	600-2 561 (600-2)