

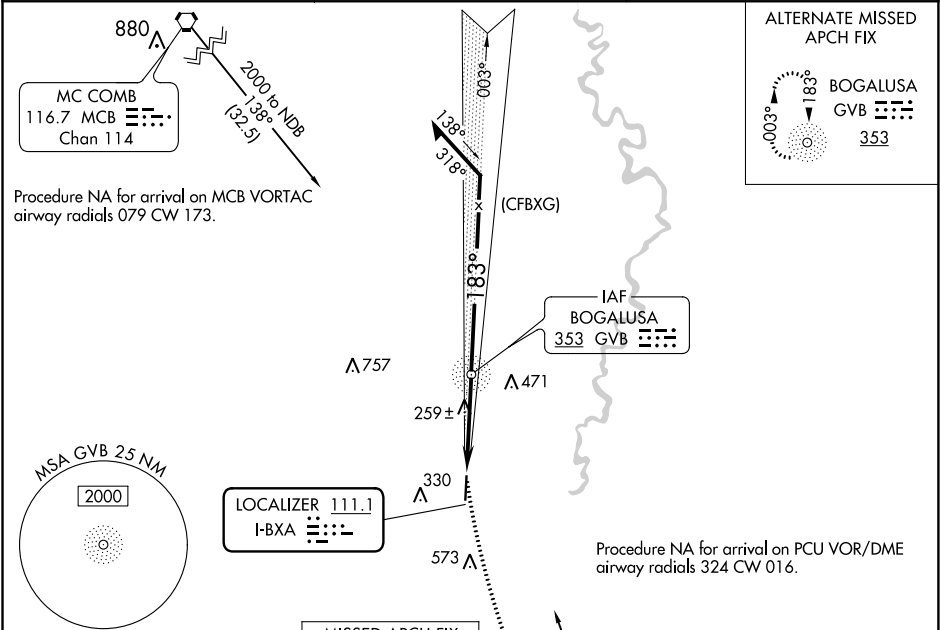
LOC I-BXA <b>111.1</b>	APP CRS <b>183°</b>	Rwy Idg TDZE Apt Elev	<b>5002</b> <b>119</b> <b>119</b>
---------------------------	------------------------	-----------------------------	---

LOC RWY 18




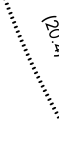


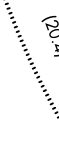
GEORGE R CARR MEMORIAL AIR FIELD (BXA)

ADF required NA	MISSED APPROACH: Climbing left turn to 2000 direct PCU VOR/DME and hold.
--------------------	--

AWOS-3PT <b>118.025</b>	HOUSTON CENTER <b>126.8 327.8</b>	UNICOM <b>122.8 (CTAF) 0</b>
----------------------------	--------------------------------------	---------------------------------



ELEV <b>119</b>	TDZE <b>119</b>
183° 3.7 NM from FAF	81
5002 X 100	36
REIL Rwy 18 and 36	MIRL Rwy 18-36
FAF to MAP 3.7 NM	
Knots	60 90 120 150 180
Min:Sec	3:42 2:28 1:51 1:29 1:14

MISSED APCH FIX		 PICAYUNE PCU 114.15 Chan 88 (Y)		 PICAYUNE 114.15 PCU Chan 88 (Y)	
 R-176-3.56° 176°		 3.56 NM 176°			
2000 		GVNB NDB			
 R-176-3.56° 176°		 3.56 NM 176°			
2000		003°			
1500		183°			
3.7 NM		3.44° TCH 45			
VGSi and descent angles not coincident (VGSi Angle 3.00/TCH 50).		Remain within 10 NM			
CATEGORY	A	B	C	D	
S-18	520-1	401 (500-1)	520-1 <sup>1</sup> / <sub>8</sub> 401 (500-1 <sup>1</sup> / <sub>8</sub> )	NA	
CIRCLING	620-1 501 (600-1)	640-1 521 (600-1)	720-1 <sup>3</sup> / <sub>4</sub> 601 (700-1 <sup>3</sup> / <sub>4</sub> )	NA	

LOC RWY 18

SC-4, 03 DEC 2020 to 31 DEC 2020

SC-4, 03 DEC 2020 to 31 DEC 2020