

WAAS CH 97328 W13A	APP CRS 131°	Rwy Idg TDZE Apt Elev	7000 208 208
--	------------------------	-----------------------------	---

RNAV (GPS) RWY 13
GRENADA MUNI (GNTF)

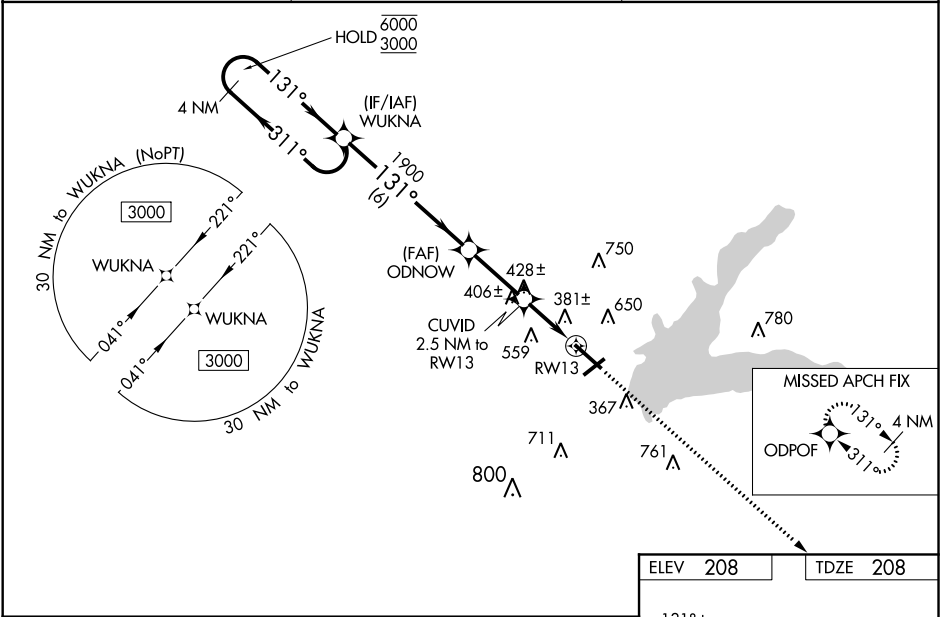
RNP APCH.

⚠ For uncompensated Baro-VNAV systems, procedure NA below -9°C or above 54°C. Baro-VNAV and VDP NA when using Greenwood altimeter setting. For inop ALS, increase LNAV/VNAV all Cats and LNAV Cat C/D visibility to 1 3⁄8 SM. When local altimeter setting not received, use Greenwood altimeter setting: Increase all DAs 65 feet; increase all MDAs 80 feet and visibility LNAV Cats C and D and Circling all Cats 1⁄4 SM. For inop ALS when using Greenwood altimeter setting, increase LPV all Cats visibility to 7⁄8 SM and LNAV/VNAV all Cats visibility to 1 1⁄2 SM. Circling Rwy 4, 22 NA at night.

MALS R

MISSED APPROACH: Climb to 3000 direct ODPOF and hold.

AWOS-3PT 118.025	MEMPHIS CENTER 128.5 381.4	UNICOM 122.8 (CTAF)
----------------------------	--------------------------------------	-------------------------------



4 NM Holding Pattern WUKNA

6000 ← 311°

3000 → 131°

GP 3.00° TCH 55

VGSI and RNAV glidepath not coincident (VGSI Angle 3.00/TCH 52).

ODNOW

CUVID 2.5 NM to RW13

*1.3 NM to RW13

*1040

3000 ODPOF

*LNAV only.

131° to RW13

7000 X 130

249

4998 X 99

31

CATEGORY	A	B	C	D
LPV DA		453-1⁄2	245 (300-1⁄2)	
LNAV/VNAV DA		666-1 1⁄8	458 (500-1 1⁄8)	
LNAV MDA	680-1⁄2	472 (500-1⁄2)	680-1	472 (500-1)
CIRCLING	1000-1	792 (800-1)	1000-2 1⁄4	1060-2 3⁄4
			792 (800-2 1⁄4)	852 (900-2 3⁄4)

MIRL Rwy 13-31

SC-4, 03 DEC 2020 to 31 DEC 2020

SC-4, 03 DEC 2020 to 31 DEC 2020