

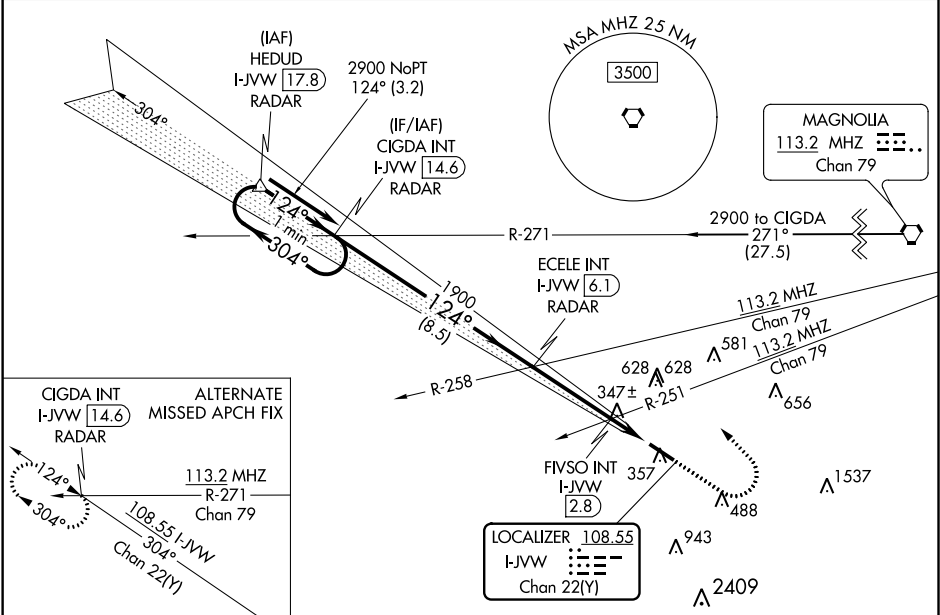
LOC/DME I-JVW	APP CRS	Rwy Idg	5499
108.55	124°	TDZE	241
Chan 22(Y)		Apt Elev	247

ILS or LOC RWY 12  
JOHN BELL WILLIAMS (JVW)

**VDP NA with Hawkins Field altimeter setting.** Circling NA for Cat D southwest of Rwy 12-30. When local altimeter setting not received, use Hawkins Field altimeter setting: increase all DA 36 feet, all MDA 40 feet, S-LOC 12 Cat C and D visibilities ¼ mile, and Circling Cat C and D visibilities ¼ mile, increase FVSO fix minimums S-LOC 12 Cat C and D visibilities ¼ mile and Circling Cat C and D visibilities ¼ mile.

**MISSED APPROACH:** Climb to 800 then climbing left turn to 2900 on heading 316° and on MHZ VORTAC R-271 to CIGDA INT/I-JVW 14.6 DME and hold.

AWOS-3PT 118.675	JACKSON APP CON ★ 125.25 319.2	UNICOM 123.0 (CTAF) 0
---------------------	-----------------------------------	--------------------------



One Minute Holding Pattern		CIGDA INT I-JVW 14.6 RADAR		ECELE INT I-JVW 6.1 RADAR		800 ↑		2900 hdg 316°		MHZ R-271		CIGDA INT		ELEV 247		TDZE 241		
2900 ← 304°		124° →		124°		FIVSO INT I-JVW 2.8		*I-JVW 2.3		I-JVW 1.1		*LOC only		124° 5.1 NM from FAF				
GS 3.00° TCH 47								*800 when using Hawkins Field altimeter setting.										
VGSI and ILS glidepath not coincident (VGSI Angle 3.00/TCH 38).				1900		*760												
8.5 NM		3.4		0.5		1.2												
CATEGORY	A	B		C		D												
S-ILS 12	441-3/4		200 (200-3/4)															
S-LOC 12	760-1	519 (600-1)		760-1 3/8		519 (600-1 3/8)												
CIRCLING	800-1	553 (600-1)		980-2 733 (800-2)		980-2 1/4 733 (800-2 1/4)												
FVSO FIX MINIMUMS (DUAL VOR RECEIVERS OR DME REQUIRED)																		
S-LOC 12	660-1	419 (500-1)		660-1 1/8		419 (500-1 1/8)												
CIRCLING	800-1	553 (600-1)		980-2 733 (800-2)		980-2 1/4 733 (800-2 1/4)												
MIRL Rwy 12-30 0 REIL Rwy 12 and 30 0																		
FAF to MAP 5.1 NM																		
Knots		60	90	120	150	180												
Min:Sec		5:06	3:24	2:33	2:02	1:42												

SC-4, 03 DEC 2020 to 31 DEC 2020

SC-4, 03 DEC 2020 to 31 DEC 2020