

WAAS CH <b>78034</b> <b>W30A</b>	APP CRS <b>304°</b>	Rwy Idg TDZE Apt Elev	<b>5499</b> <b>247</b> <b>247</b>
--	------------------------	-----------------------------	---

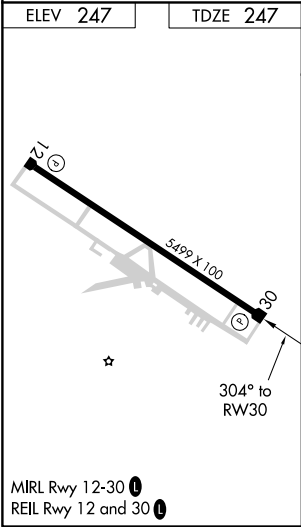
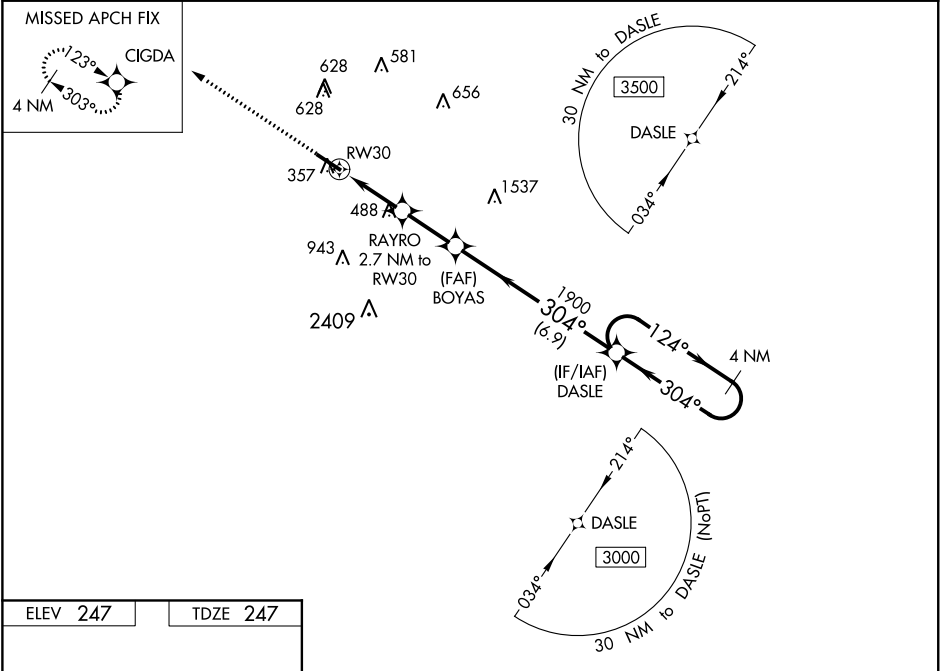
RNAV (GPS) RWY 30

JOHN BELL WILLIAMS (JVW)

For uncompensated Baro-VNAV systems, LNAV/VNAV NA below -15°C (5°F) or above 54°C (130°F). DME/DME RNP-0.3 NA. Circling NA for Cat D southwest of Rwy 12-30. Helicopter visibility reduction below ¾ SM NA. When local altimeter setting not received, use Hawkins Field altimeter setting increase all DA/MDA 40 feet, increase LPV and LNAV/VNAV all Cats visibility and LNAV Cat C/D visibility ⅓ mile, increase Circling Cat C visibility ¼ mile. Baro-VNAV and VDP NA when using Hawkins Field altimeter setting.

MISSED APPROACH:  
Climb to 2900 direct  
CIGDA and hold.

AWOS-3PT <b>118,675</b>	JACKSON APP CON★ <b>125,25 319.2</b>	UNICOM <b>123.0 (CTAF) 0</b>
----------------------------	---	---------------------------------



2900 CIGDA  
↑  
★

VGSI and RNAV glidepath not coincident  
(VGSI Angle 4.00/TCH 50).

4 NM Holding Pattern

\*LNAV only

RAYRO 2.7 NM to RW30

BOYAS 1900

DASLE

124° → 3000

← 304°

GP 3.03° TCH 53

1 NM 1.7 NM 2.3 NM 6.9 NM

CATEGORY	A	B	C	D
LPV DA		513-7⁄8	266 (300-7⁄8)	
LNAV/VNAV DA		699-1½	452 (500-1½)	
LNAV MDA	740-1	493 (500-1)	740-1 ¾	493 (500-1 ¾)
CIRCLING	740-1 493 (500-1)	760-1 513 (600-1)	980-2 733 (800-2)	980-2¼ 733 (800-2¼)