

WAAS CH 86711 W15A	APP CRS 146°	Rwy Idg 5001 TDZE 10 Apt Elev 10
--	------------------------	---

RNAV (GPS) RWY 15
SOUTHLAND FIELD (UXTL)

▼ Inoperative table does not apply to LNAV/VNAV. Baro-VNAV NA when using Lake Charles Rgnl altimeter setting. For compensated Baro-VNAV systems, LNAV/VNAV NA below -15°C (5°F) or above 48°C (118°F). DME/DME RNP-0.3 NA. Visibility reduction by helicopters NA. When local altimeter setting not received, use Lake Charles Rgnl altimeter setting and increase all DA 19 feet, all MDA 20 feet and LPV visibility $\frac{1}{4}$ mile all Cats. VDP NA when using Lake Charles Rgnl altimeter setting.

ODALS



MISSED APPROACH: Climb to 2500 direct WERUM and via 236° track to ZEVGA and via 309° track to OFERS and hold.

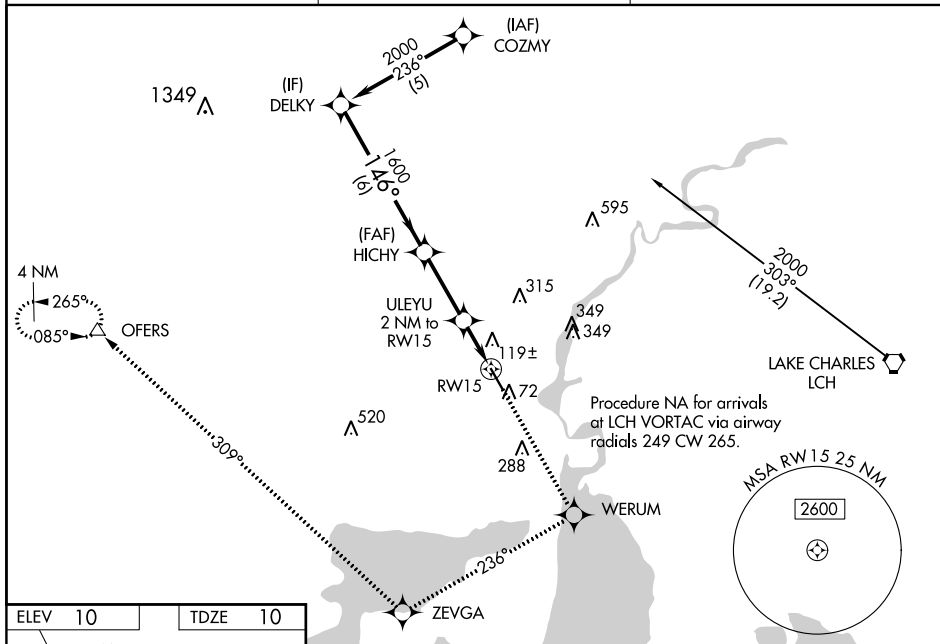
AWOS-3PT
118.175

LAKE CHARLES APP CON ★

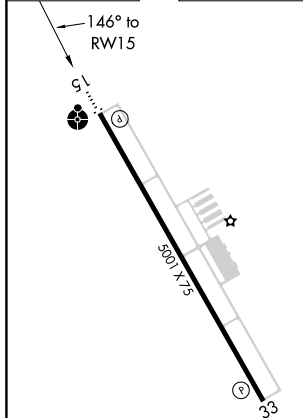
119.35 282.3

UNICOM

122.8 (CTAF) L



ELEV 10		TDZE 10
---------	--	---------



RFIL Rwy 33 L

MIRL Rwy 15-33 **L**

Procedure
Turn
NA

DELKY

2000

GP 3.00°
TCH 40

1600

VGSI and RNAV glidepath not
coincident (VGSI Angle 3.00/TCH 50).

2500	WERUM	tr 236°	ZEVGA	tr 309°	OFERS
					

* LNAV only

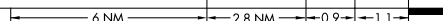
HICHY

ULEYU

2 NM to RW15

*1.1 NM to RW15

RW15



CATEGORY		A	B	C	D
LPV	DA	309-1 299 (300-1)			
LNAV/ VNAV	DA	419-1½ 409 (500-1½)			
LNAV	MDA	380-¾ 370 (400-¾)			380-1¼ 370 (400-1¼)
CIRCLING		420-1 410 (500-1)	520-1 510 (600-1)	520-1½ 510 (600-1½)	640-2 630 (700-2)

SULPHUR, LOUISIANA

Orig 12MAR09

30° 08' N-93° 23' W

SOUTHLAND FIELD (UXL)

RNAV (GPS) RWY 15