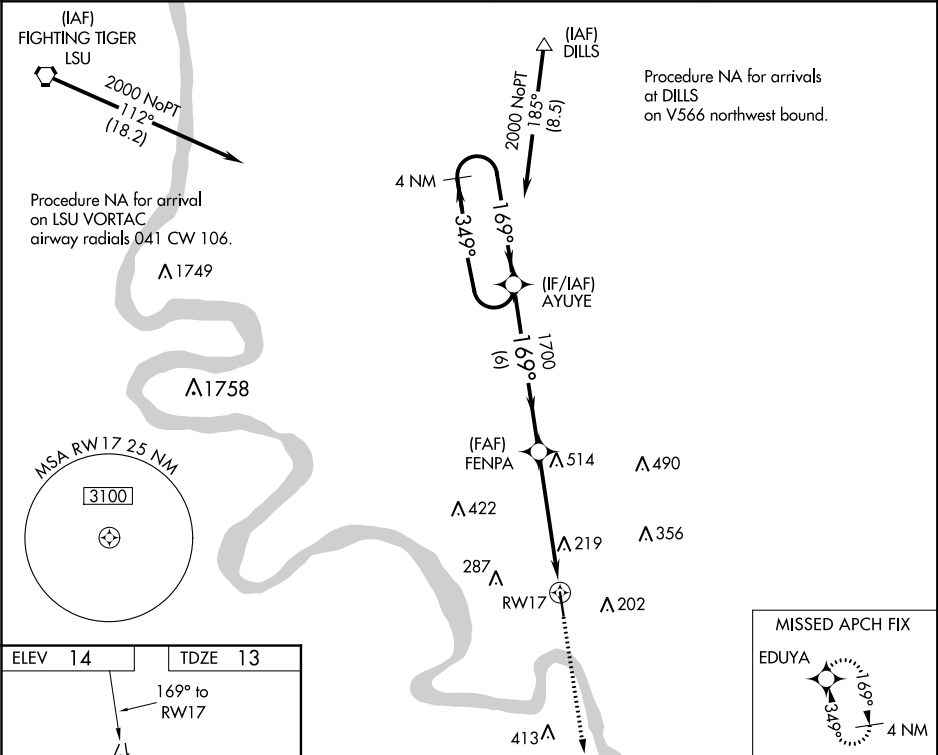


WAAS CH 78429 W17A	APP CRS 169°	Rwy Idg TDZE 13 Apt Elev 14	5003
--	------------------------	---	-------------

RNAV (GPS) RWY 17
LOUISIANA RGNL (REG)

Baro-VNAV NA. DME/DME RNP-0.3 NA. NA Use Baton Rouge altimeter setting. Rwy 17 helicopter visibility reduction below ¾ SM NA.	MISSED APPROACH: Climb to 2000 direct EDUYA and hold.
---	---

BTR ASOS 125.2	BATON ROUGE APP CON★ 126.5 278.3	GCO 135.075	UNICOM 123.0 (CTAF) 0
--------------------------	--	-----------------------	---------------------------------



4 NM

Holding Pattern

2000

GP 3.00°

TCH 40°

349°

169°

AYUYE

FENPA

1700

1700

169°

6 NM

5.1 NM

RWY17

2000

↑

EDUYA

✦

VGSI and RNAV glidepath not coincident

(VGSI Angle 3.00/TCH 50).

CATEGORY	A		B		C		D	
LPV DA			407-1⅜		394 (400-1⅜)			
LNAV/VNAV DA			471-1⅝		458 (500-1⅝)			
LNAV MDA	540-1		527 (600-1)		540-1½		527 (600-1½)	
CIRCLING	540-1 526 (600-1)		600-1 586 (600-1)		760-2¼ 746 (800-2¼)		760-2½ 746 (800-2½)	

SC-4, 03 DEC 2020 to 31 DEC 2020

SC-4, 03 DEC 2020 to 31 DEC 2020