

OAKDALE, LOUISIANA

AL-9133 (FAA)

19115

WAAS CH 49214 W36A	APP CRS 357°	Rwy Idg 5000 TDZE 107 Apt Elev 107
--	------------------------	---

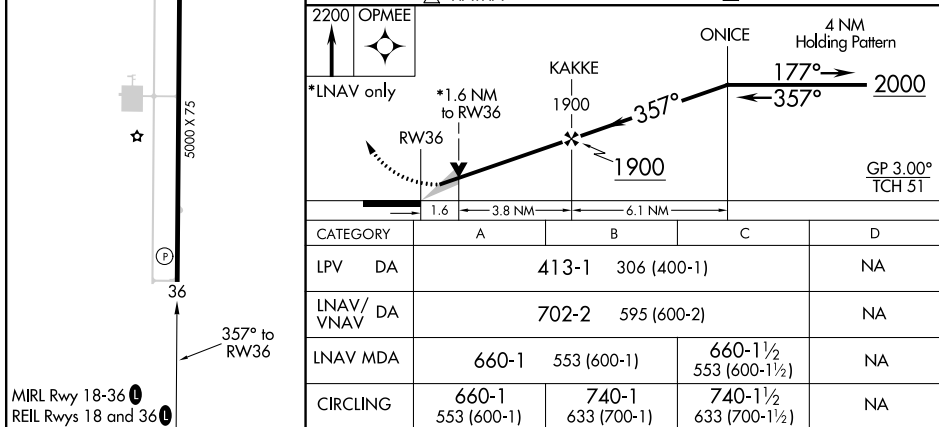
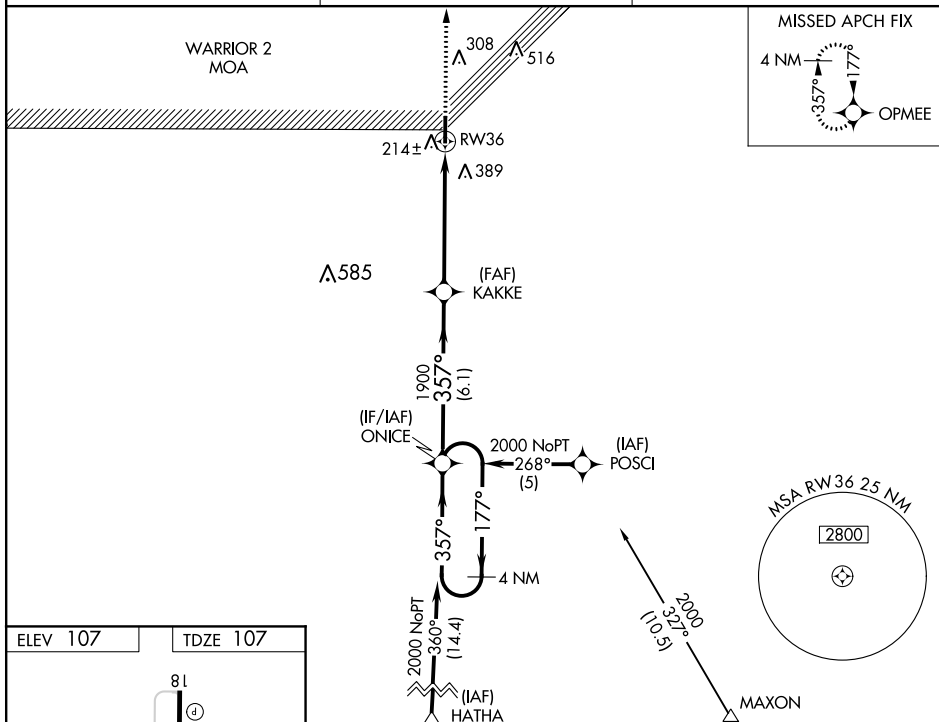
RNAV (GPS) RWY 36

ALLEN PARISH (ACP)

▼ Baro-VNAV NA when using Alexandria Intl altimeter setting. For uncompensated Baro-VNAV systems, UNAV/VNAV NA below -15°C (5°F) or above 54°C (130°F). DME/DME RNP-0.3 NA. VDP NA when using Alexandria Intl altimeter setting. When local altimeter setting not received, use Alexandria Intl altimeter setting and increase all DA 84 feet, all MDA 100 feet. Increase LPV all Cats, UNAV Cat C and Circling Cat C visibility ½ mile, and UNAV/VNAV all Cats visibility ½ mile.

MISSED APPROACH:
Climb to 2200 direct
OPMEE and hold.

AWOS-3PT 118.275	POLK APP CON 123.7 261.3	UNICOM 122.8 (CTAF) 0
----------------------------	------------------------------------	--



CATEGORY	A	B	C	D
LPV DA	413-1	306 (400-1)		NA
RNAV/ VNAV	702-2	595 (600-2)		NA
RNAV MDA	660-1	553 (600-1)	660-1½ 553 (600-1½)	NA
CIRCLING	660-1 553 (600-1)	740-1 633 (700-1)	740-1½ 633 (700-1½)	NA

OAKDALE, LOUISIANA
Amdt 2 27AUG09

30°45'N-92°41'W

ALLEN PARISH (ACP)

RNAV (GPS) RWY 36

SC-4, 03 DEC 2020 to 31 DEC 2020