

WAAS CH <b>56212</b> <b>W17A</b>	APP CRS <b>167°</b>	Rwy Idg <b>8500</b> TDZE <b>194</b> Apt Elev <b>194</b>
--	------------------------	---

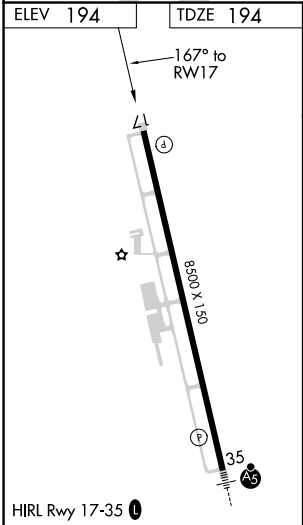
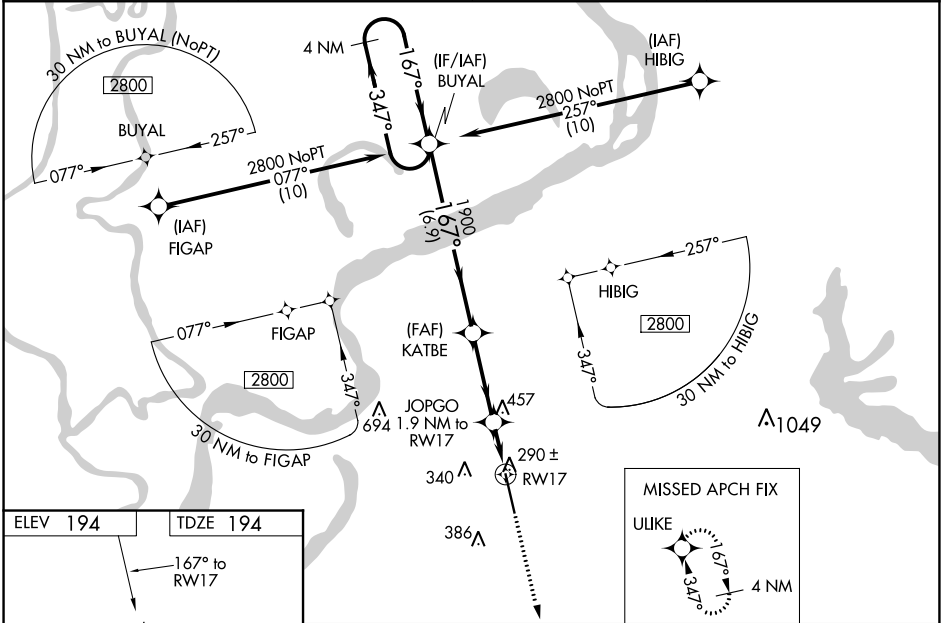
AL-9521 (FAA)

RNAV (GPS) RWY 17  
TUNICA MUNI (UTA)

RNP APCH.	<p><b>⚠</b> For uncompensated Baro-VNAV systems, LNAV/VNAV NA below -15°C (5°F) or above 42°C (107°F). For inop ALS, increase LNAV/VNAV visibility all Cats to ¾ SM, and LNAV Cats C, D visibility to 1¾ SM. Baro VNAV and VDP NA when using Memphis altimeter setting. When local altimeter setting not received, use Memphis altimeter setting and increase LPV DA to 480, LNAV/VNAV DA to 557, and all MDA 100 feet, increase LNAV/VNAV visibility all Cats to 1 SM, and Circling Cat C visibility to 1¾ SM. For inop ALS when using Memphis altimeter setting, increase LPV all Cats visibility to ¾ SM, LNAV/VNAV all Cats visibility to 1 SM, LNAV Cats C/D visibility to 1¾ SM.</p>

MISSED APPROACH:  
Climb to 2800 direct  
ULIKE and hold.

AWOS-3 <b>118.075</b>	MEMPHIS APP CON <b>119.1 291.6</b>	CLNC DEL <b>118.9</b>	UNICOM <b>123.0 (CTAF) 0</b>
--------------------------	---------------------------------------	--------------------------	---------------------------------



4 NM Holding Pattern		BUYAL		KATBE		JOPGO 1.9 NM to RW17		2800	ULKE
2800		167°		167°		*1.2 NM to RW17		*LNAV only.	
GP 3.00° TCH 50		1900		*840		RW17			
		6.9 NM		3.3 NM		0.7		1.2 NM	
CATEGORY		A		B		C		D	
LPV DA		394-¾		200 (200-¾)					
LNAV/ VNAV DA		471-¾		277 (300-¾)					
LNAV MDA		640-¾ 446 (500-¾)		640-1⅛ 446 (500-1⅛)					
CIRCLING		680-1 486 (500-1)		700-1½ 506 (600-1½)		760-2 566 (600-2)			