

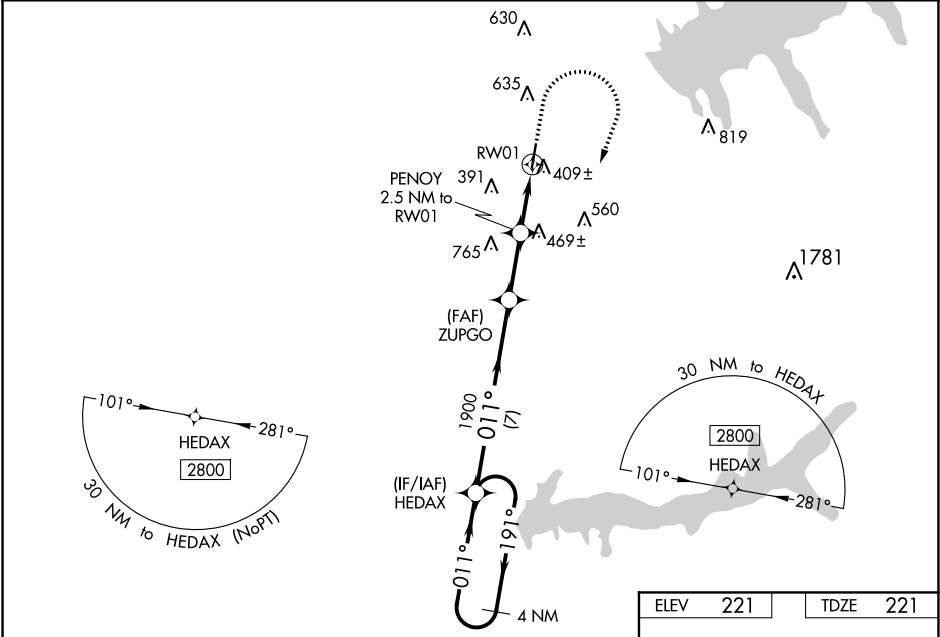
WAAS CH <b>58134</b> <b>W01A</b>	APP CRS <b>011°</b>	Rwy Idg <b>4412</b> TDZE <b>221</b> Apt Elev <b>221</b>
--	------------------------	---

**RNAV (GPS) RWY 1**  
PANOLA COUNTY (PMU)

**⚠** For uncompensated Baro-VNAV systems, LNAV/VNAV NA below -15°C (5°F) or above 46°C (115°F).  
**⚠** DME/DME RNP-0.3 NA. Baro-VNAV and VDP NA when using University-Oxford altimeter setting.  
When local altimeter setting not received, use Oxford altimeter setting and increase LPV DA to 688, LNAV/VNAV DA to 729 and MDA 80 feet, increase LPV and LNAV/VNAV all Cats visibility ¼ mile, LNAV Cats C, D visibility ½ mile, and Circling Cats B, C visibility ½ mile.  
Helicopter visibility reduction below ¾ SM NA.

**MISSED APPROACH:**  
Climb to 900 then climbing right turn to 2800 direct HEDAX and hold.

AWOS-3PT <b>118.225</b>	MEMPHIS CENTER <b>128.5 381.4</b>	UNICOM <b>122.8 (CTAF) 0</b>
----------------------------	--------------------------------------	---------------------------------



4 NM Holding Pattern		VGSI and RNAV glidepath not coincident (VGSI Angle 4.00/TCH 42).		900	2800	HEDAX
2800		HEDAX		ZUPGO	PENOY	RW01
GP 3.10° TCH 59		011°		1900	2.5 NM to RW01	*0.9 NM to RW01
7 NM		2.4 NM		1.6 NM	0.9	
CATEGORY	A	B	C	D		
LPV DA	614-1¼		393 (400-1¼)			
LNAV/VNAV DA	661-1⅜		440 (500-1⅜)			
LNAV MDA	660-1	439 (500-1)	660-1¼	439 (500-1¼)		
CIRCLING	740-1 519 (600-1)	1000-1 779 (800-1)	1000-2¼ 779 (800-2¼)	1120-3 899 (900-3)		

