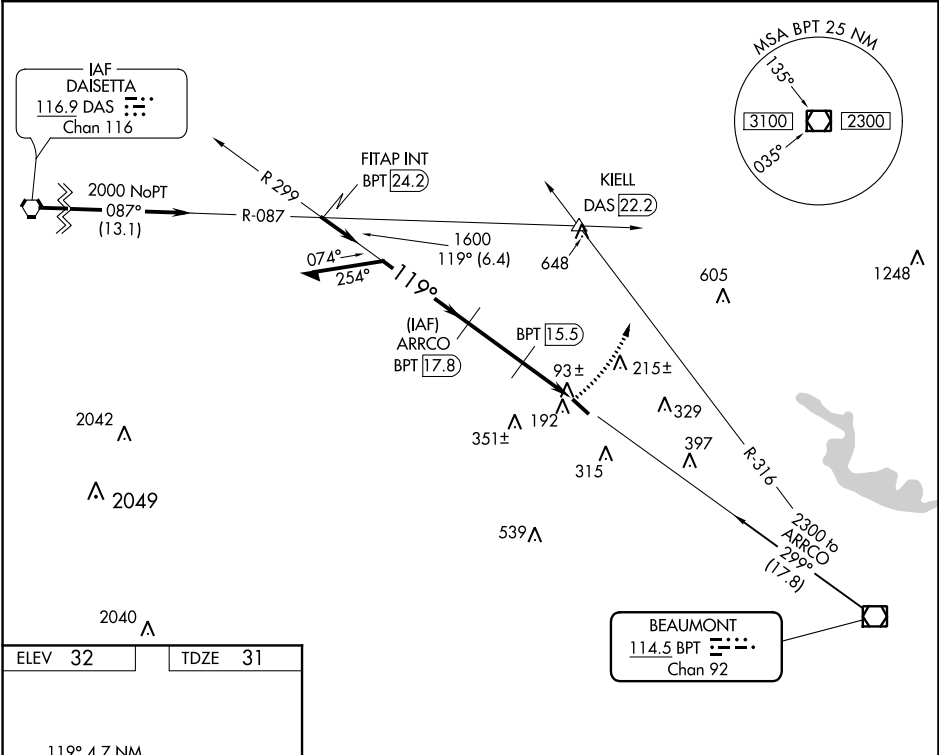


VOR/DME BPT	APP CRS	Rwy Idg	3669
114.5	119°	TDZE	31
Chan 92		Apt Elev	32

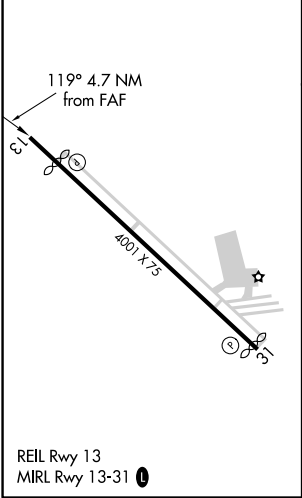
VOR/DME RWY 13  
BEAUMONT MUNI (BMT)

<div><div></div><div>NA</div></div>	Use Beaumont-Port Arthur, TX (Jack Brooks Rgnl) altimeter setting. Circling NA Rwy 16-34. Visibility reduction by helicopters NA.	MISSED APPROACH: Climbing left turn to 2300 via BPT R-316 to KIELL INT/DAS 22.2 DME.
-------------------------------------	---	--

AWOS-3P/T	HOUSTON APP CON	CLNC DEL	UNICOM
118.425	121.3 377.1	121.75	123.0 (CTAF) 0



ELEV 32	TDZE 31
---------	---------



VGSI and descent angles not coincident (VGSI Angle 3.00/TCH 40).			
<div>2300</div> <div>1600</div> <div>860</div> <div>2.3 NM</div> <div>2.4 NM</div>			
CATEGORY	A	B	C
S-13	580-1	549 (600-1)	580-1½
CIRCLING	580-1	620-1	720-2
	548 (600-1)	588 (600-1)	688 (700-2)
			D
			580-1¾
			549 (600-1¾)
			720-2¼
			688 (700-2¼)