

WAAS CH 65606 W14A	APP CRS 138°	Rwy Idg 6000 TDZE 5 Apt Elev 6
--	------------------------	---

RNAV (GPS) RWY 14
SCHOLES INTL AT GALVESTON (GLS)

V Baro-VNAV and VDP NA when using William P Hobby altimeter setting. For uncompensated Baro-VNAV systems, LNAV/VNAV NA below 1°C (34°F) or above 54°C (130°F). Circling NA east of Rwy 18 and northeast of Rwy 32. DME/DME RNP-0.3 NA. When local altimeter setting not received, use William P Hobby altimeter setting and increase all DA 79 feet and all MDA 80 feet. Increase LNAV/VNAV all Cats visibility to ¾ mile, LNAV Cats C/D/E visibility to 1 mile, and Circling Cat E visibility to 2½ mile. For inop MALSR, increase LPV Cat E visibility to ¾, LNAV/VNAV Cat E visibility to 1½, and LNAV Cat E visibility to 1¾ mile. For inop MALSR when using William P Hobby altimeter setting, increase LPV all Cats visibility to ¾ mile, LNAV Cat E visibility to 1½ mile.

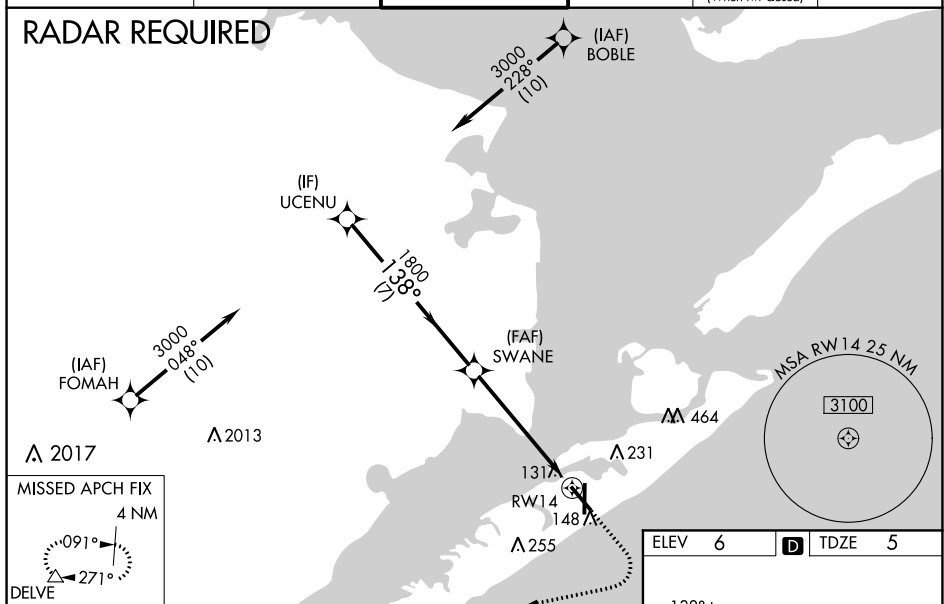
MALSR



MISSED APPROACH:
Climb to 1200 then
climbing right turn to
3000 direct DELVE
and hold.

ASOS 119,275	HOUSTON APP CON 134.45 284.0	GALVESTON TOWER ★ 120.575 (CTAF) 0	GND CON 118,625	CLNC DEL 135.35 (When twr closed)	UNICOM 123.05
------------------------	--	---	---------------------------	--	-------------------------

RADAR REQUIRED

[illegible]