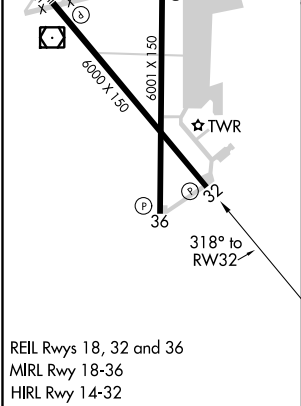
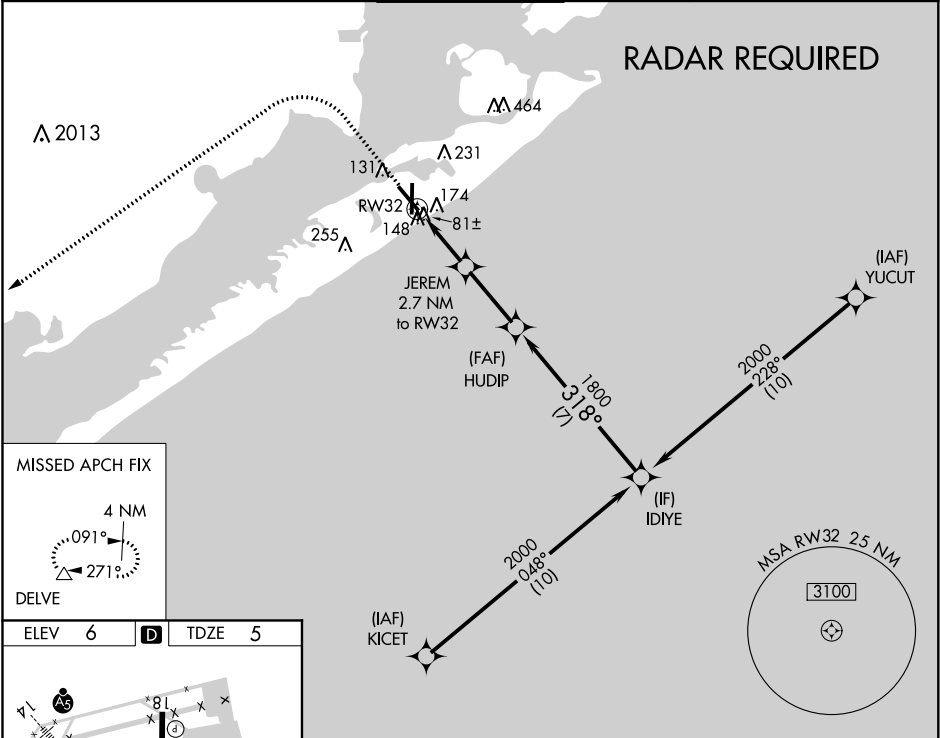




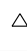

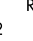


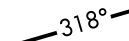
WAAS CH 40101 W32A	APP CRS 318°	Rwy Idg TDZE Apt Elev	6000 5 6
--	------------------------	-----------------------------	-------------------------------------

RNAV (GPS) RWY 32
SCHOLES INTL AT GALVESTON (GLS)

<p>⚠ Circling NA east of Rwy 18 and northeast of Rwy 32. DME/DME RNP-0.3 NA. Helicopter visibility reduction below ¾ SM NA. VDP NA with William P Hobby altimeter setting. When local altimeter setting not received, use William P Hobby altimeter setting and increase all MDA 80 feet. Increase LP Cat C/D/E visibility to 1½, increase LNAV Cat C/D/E visibility to 1¾ and increase Cat E Circling visibility to 2½.</p>	<p>MISSED APPROACH: Climb to 800 then climbing left turn to 3000 direct DELVE and hold.</p>
---	--

ASOS 119.275	HOUSTON APP CON 134.45 284.0	GALVESTON TOWER ★ 120.575 (CTAF) 0	GND CON 118.625	CLNC DEL 135.35 (When twr closed)	UNICOM 123.05
------------------------	--	---	---------------------------	--	-------------------------



800		3000		DELVE							
											
RW32		0.9 NM to RW32		JEREM 2.7 NM to RW32		HUDIP		IDIYE		2000	
											
		3.00°		900		1800		318°			
		TCH 46									
-0.9 NM		1.8 NM		2.8 NM		7 NM					
CATEGORY		A		B		C		D		E	
LP MDA		340-1 335 (400-1)									
LNAV MDA		440-1 435 (500-1)				440-1½ 435 (500-1½)					
CIRCLING		500-1 494 (500-1)				500-1½ 494 (500-1½)		560-2 554 (600-2)		620-2¼ 614 (700-2¼)	

SC-5, 03 DEC 2020 to 31 DEC 2020

SC-5, 03 DEC 2020 to 31 DEC 2020