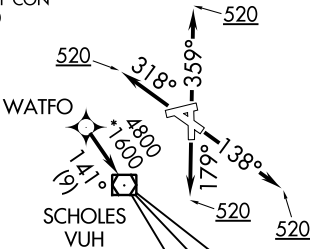


ASOS
119.275
CLNC DEL (When twr closed)
135.35
GND CON
118.625
GALVESTON TOWER★
120.575 (CTAF)
HOUSTON DEP CON
134.45 284.0

TOP ALTITUDE:
ASSIGNED BY ATC



TAKEOFF MINIMUMS
Rwy 14, 18, 32, 36: Standard with minimum
climb of 500' per NM to 520.

- NOTE: GPS required.
NOTE: RADAR required.
NOTE: RNAV 1.

NOTE: Chart not to scale.

DEPARTURE ROUTE DESCRIPTION

- TAKEOFF RWY 14: Climb on heading 138° to 520, for RADAR vectors to WATFO, thence. . .
TAKEOFF RWY 18: Climb on heading 179° to 520, for RADAR vectors to WATFO, thence. . .
TAKEOFF RWY 32: Climb on heading 318° to 520, for RADAR vectors to WATFO, thence. . .
TAKEOFF RWY 36: Climb on heading 359° to 520, for RADAR vectors to WATFO, thence. . .

. . . on track 141° to VUH VOR/DME, then on (transition). Maintain ATC assigned altitude.
Expect filed altitude 10 minutes after departure.

- ANKRR TRANSITION (WATFO5.ANKRR)
KELPP TRANSITION (WATFO5.KELPP)
MUSYL TRANSITION (WATFO5.MUSYL)

SC-5, 03 DEC 2020 to 31 DEC 2020

SC-5, 03 DEC 2020 to 31 DEC 2020