

HI-ILS Y or LOC Y RWY 35L

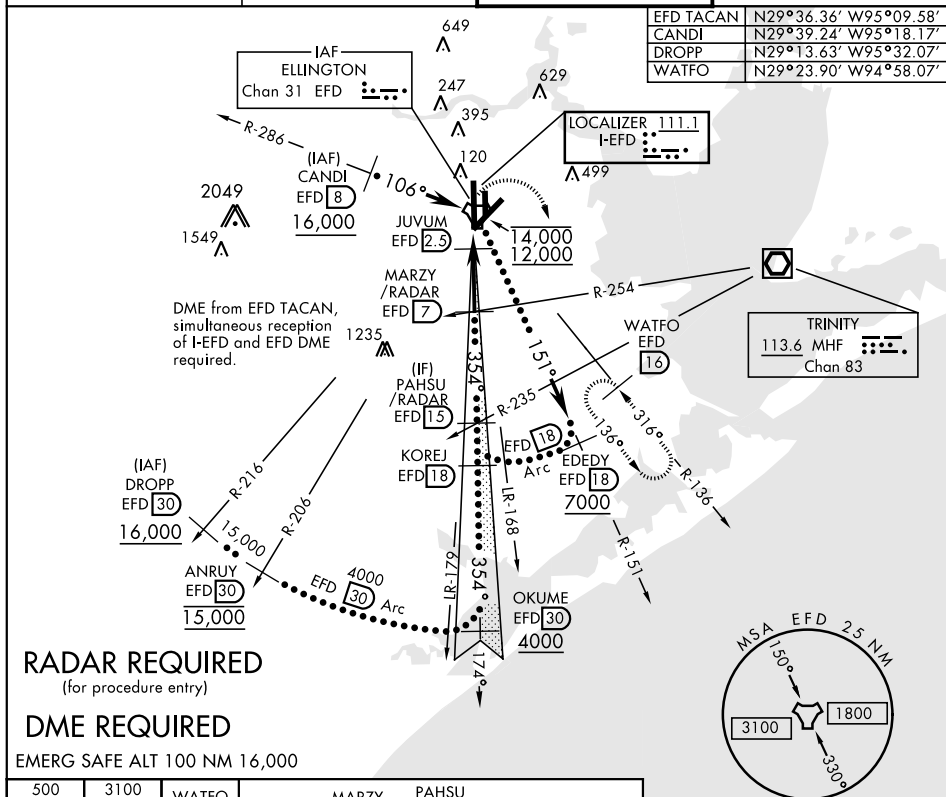
LOC I-EFD 111.1	APCH CRS 354°	Rwy Idg TDZE Arprt Elev 9001 28 33
---------------------------	-------------------------	--

JAL-197 [USAF]

HOUSTON/ELLINGTON (KEFD)

<p>▼ * When ALS inop, increase CAT CDE RVR to 60. ** Circling not authorized W of rwy 17L-35R</p>	<p>MALSF A4</p>	<p>MISSED APPROACH: Climb to 500 then climbing right turn to 3100 via EFD TACAN R-136 to WATFO INT/EFD 16 DME and hold.</p>
---	---------------------	---

ATIS 135.575 269.9	HOUSTON APP CON 134.45 284.0	ELLINGTON TOWER 126.05 253.5	GND CON 121.6 275.8
------------------------------	--	--	-------------------------------



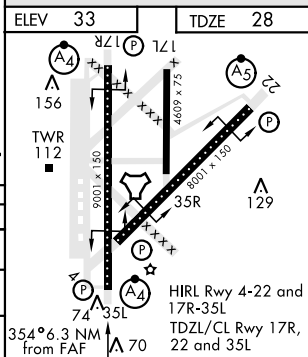
RADAR REQUIRED

(for procedure entry)

DME REQUIRED

EMERG SAFE ALT 100 NM 16,000

500	3100	WATFO	MARZY	PAHSU	KOREJ
↑	EFD R-136	EFD 16	EFD 7 /RADAR	EFD 15 /RADAR	EFD 18
TACAN	JUVUM	↑LOC Only	2100	3100	3100
BAYUU	EFD 2.5	620		VGSI and ILS	Glidepath
				not coincident	(VGSI angle 3.00/TCH 32)
				GS 3.00°	TCH 54
0.6 NM	1.1 NM	4.6 NM			
CATEGORY	C	D	E		
S-ILS 35L	228/40	200	(200-¾)		
S-LOC 35L *	440/50	412	(500-1)		
CIRCLING **	580-1½ 547 (600-1½)	640-2 607 (700-2)	700-2¼ 667 (700-2¼)		



HI-ILS Y or LOC Y RWY 35L