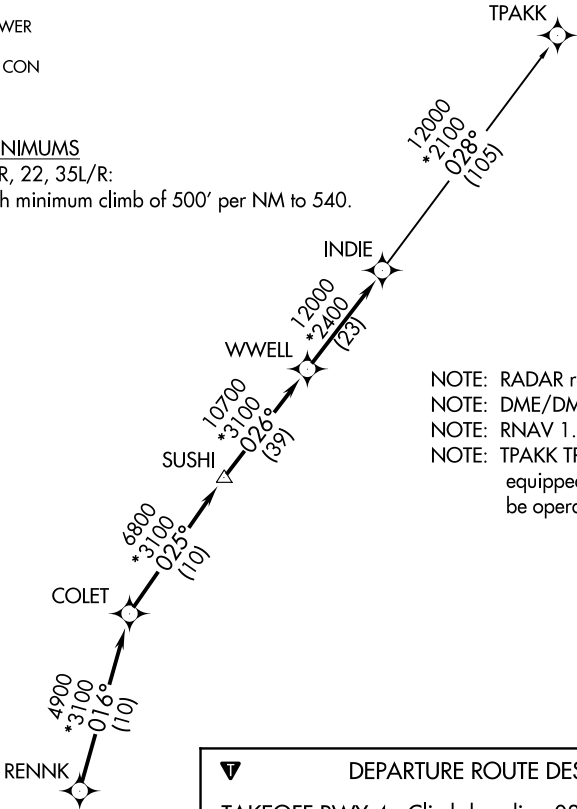


ATIS
135.575 269.9
GND CON
121.6 275.8
ELLINGTON TOWER
126.05 253.5
HOUSTON DEP CON
134.45 284.0

TOP ALTITUDE:
ASSIGNED BY ATC

TAKEOFF MINIMUMS

Rwy 4, 17L/R, 22, 35L/R:
Standard with minimum climb of 500' per NM to 540.



- NOTE: RADAR required.
NOTE: DME/DME/IRU or GPS required.
NOTE: RNAV 1.
NOTE: TPAKK TRANSITION: For non GPS equipped aircraft TNV DME must be operational.

DEPARTURE ROUTE DESCRIPTION

TAKEOFF RWY 4: Climb heading 039° to 540 for RADAR vectors to RENNK, thence

TAKEOFF RWYS 17L/R: Climb heading 174° to 540 for RADAR vectors to RENNK, thence

TAKEOFF RWY 22: Climb heading 219° to 540 for RADAR vectors to RENNK, thence

TAKEOFF RWYS 35L/R: Climb heading 354° to 540 for RADAR vectors to RENNK, thence

. . . . on track 016° to COLET, then on track 025° to SUSHI, then on track 026° to WWELL, then on track 026° to INDIE, then on (transition). Maintain ATC assigned altitude. Expect filed altitude 10 minutes after departure.

TPAKK TRANSITION (INDIE7.TPAKK)

NOTE: Chart not to scale.