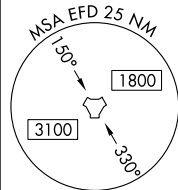


TACAN RWY 17R
ELLINGTON (EFD)

MISSED APPROACH: Climbing left turn to 3100 on EFD TACAN R-136 to WATFO/EFD 16 DME and hold.

RADAR REQUIRED



ESA W/IN 100 NM 16000

SC-5, 03 DEC 2020 to 31 DEC 2020