
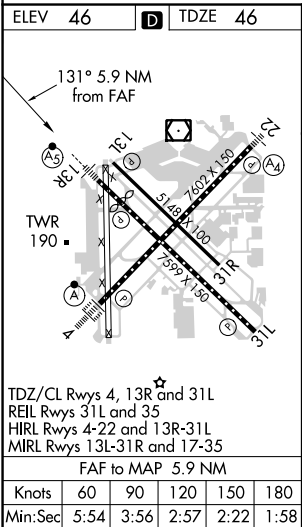
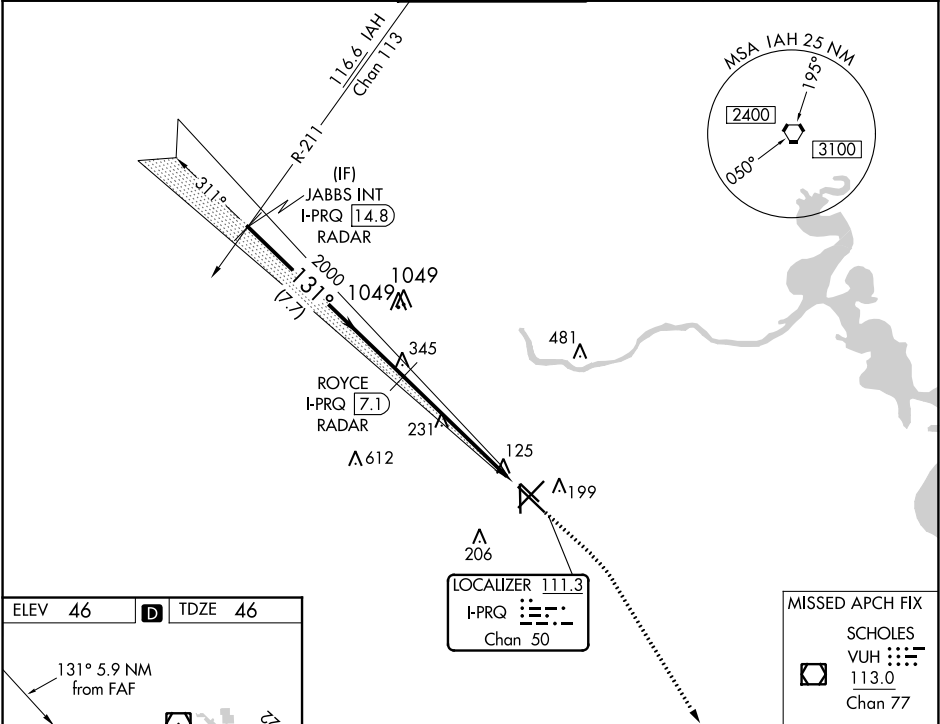


| | | | |
|---------------|---------|----------|------|
| LOC/DME I-PRQ | APP CRS | Rwy Idg | 6565 |
| 111.3 | 131° | TDZE | 46 |
| Chan 50 | | Apt Elev | 46 |

ILS or LOC RWY 13R

WILLIAM P HOBBY (HOU)

| | | | | | |
|--|--|----------------------------|---|--|-------|
| RADAR or DME required for LOC only. RADAR required for procedure entry. | | | <div>MALSR</div> <div></div> | MISSED APPROACH: Climb to 800 then climbing right turn to 2200 direct VUH VOR/DME. | |
| <div><div><div>▼</div><div>▲</div></div><div>Inop table does not apply to S-ILS Rwy 13R. Rwy 13R helicopter visibility reduction below ¾ SM NA. For inop ALS, increase S-LOC 13R Cats A/B visibility to RVR 5500, Cats C/D/E to 1¾ SM.</div></div> | | | | | |
| D-ATIS 124.6 | HOUSTON APP CON 120.05 379.1 EAST 124.35 316.15 WEST | HOBBY TOWER 118.7 256.9 | GND CON 121.9 | CLNC DEL 125.45 | CPDLC |



| | | | | | | | | | | | |
|---|--------------------|--|-------------|--|--------|------------------------|--------------|-----------------------|------------------------|-----------------------|--|
| <div>JABBS INT I-PRQ 14.8 RADAR</div> | | | | <div>ROYCE I-PRQ 7.1 RADAR</div> | | <div>800 ↑</div> | | <div>2200 ↷</div> | | <div>VUH ◻</div> | |
| <div>2000 ← 131°</div> | | | | <div>2000</div> | | <div>* I-PRQ 2.6</div> | | | | <div>* LOC only</div> | |
| <div>GS 3.00° TCH 49</div> | | | | <div>2000</div> | | <div>I-PRQ 1.3</div> | | | | | |
| <div>7.7 NM</div> | | | | <div>4.5 NM</div> | | <div>1.4 NM</div> | | | | | |
| CATEGORY | A | | B | | C | | D | | E | | |
| S-ILS 13R | 296/40 250 (300-¾) | | | | | | | | | | |
| S-LOC 13R | 540/40 | | 494 (500-¾) | | 540/50 | | 494 (500-1) | | 540/60 494 (500-1¼) | | |
| CIRCLING | 540-1 | | 494 (500-1) | | 740-2¼ | | 694 (700-2¼) | | 860-3 814 (900-3) | | |