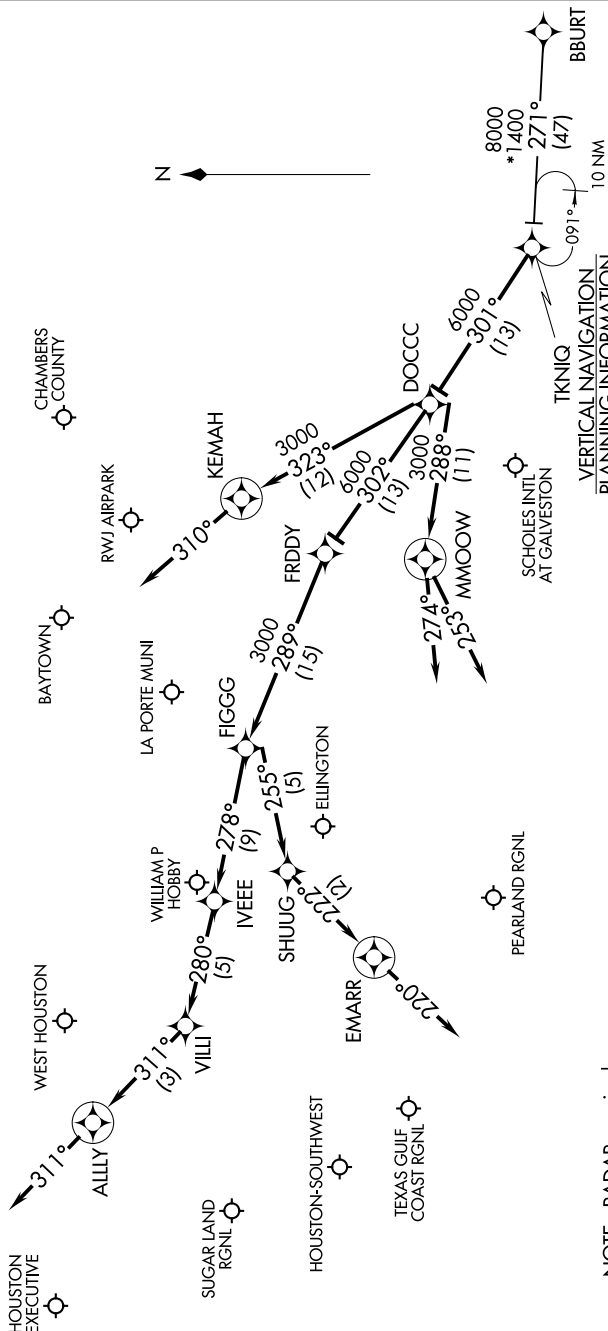
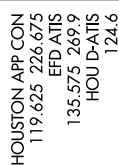


TKNIQ TWO ARRIVAL (RNAV)

HOUSTON, TEXAS



VERTICAL NAVIGATION PLANNING INFORMATION

HOU TURBOJETS: Expect 12000 250K
SOUTH SATELLITE TURBOJETS: Expect 12000

NOTE: RADAR required.

NOTE: RNAV 1.

NOTE: DME/DME/IRU or GPS required.

NOTE: Turbojet and turboprop aircraft only.

NOTE: ATC assigned only for aircraft landing HOU

(NARRATIVE ON FOLLOWING PAGE)

NOTE: Chart not to scale.