

## TSHRT ONE ARRIVAL

## Arrival Routes

HOUSTON, TEXAS

HOUSTON APP CON

119.175

EFD ATIS  
135.575 269.9

HOU D-ATIS

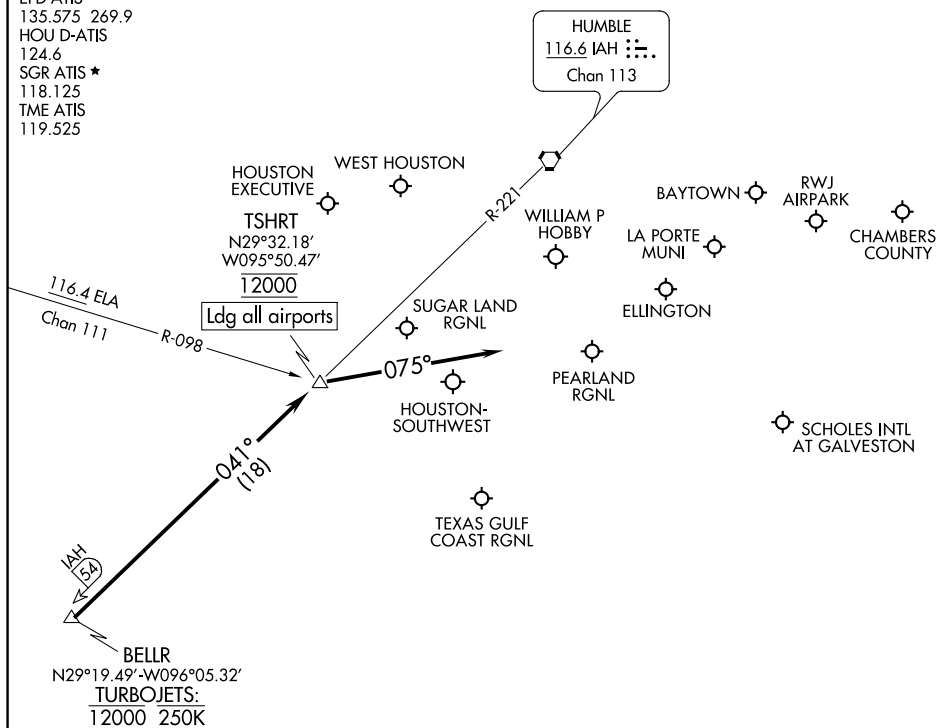
124.6

SGR ATIS ★

118.125

TME ATIS

119.525



NOTE: RADAR required.

NOTE: DME/DME/IRU or GPS equipped turbojet and turboprop aircraft landing HOU must file the BELLR (RNAV) STAR.

NOTE: DME required for holding at HYDRL.

NOTE: Chart not to scale.

## ARRIVAL ROUTE DESCRIPTION

... from over BELLR on IAH R-221 to cross TSHRT at 12000. From TSHRT fly heading 075° for vectors to final approach course.

## TSHRT ONE ARRIVAL

## Arrival Routes

HOUSTON, TEXAS

(BELLR.TSHRT1) 26MAR20