

WAAS CH 53630 W13A	APP CRS 132°	Rwy Idg 5001 TDZE 13 Apt Elev 14
--	------------------------	---

RNAV (GPS) RWY 13
PALACIOS MUNI (PSX)

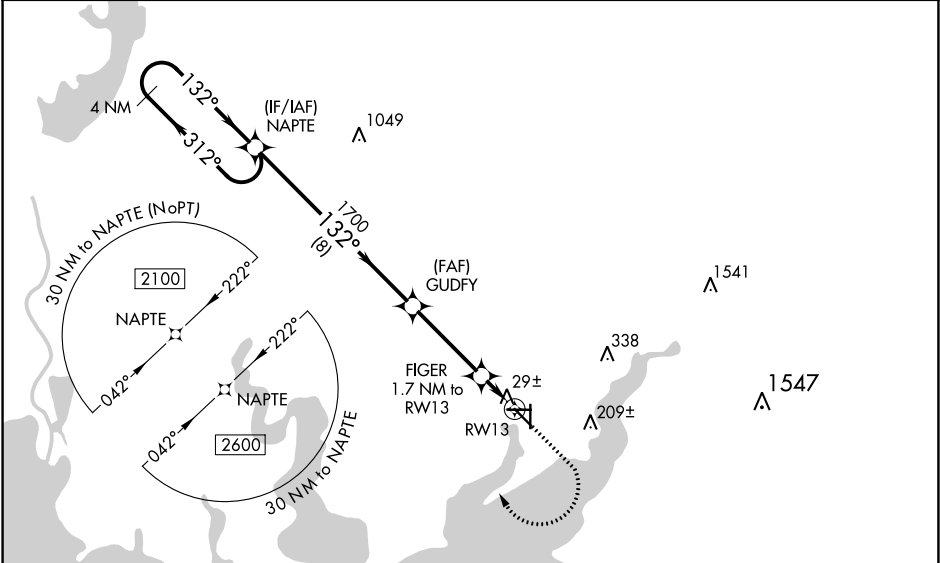
RNP APCH.

▼ For uncompensated Baro-VNAV systems, LNAV/VNAV NA below -20°C or above 54°C.

⚠ When local altimeter setting not received, use Port Lavaca altimeter setting and increase all MDA 60 feet; increase LPV and LNAV/VNAV all Cats visibility 1/8 SM and LNAV Cat C and D and Circling Cat C visibility 1/4 SM. Baro-VNAV and VDP NA when using Port Lavaca altimeter setting. Rwy 13 helicopter visibility reduction below 3/4 SM NA. Circling Rwy 8, 18, 26, 31, 36 NA at night.

MISSED APPROACH:
Climb to 500 then climbing right turn to 2100 direct NAPTE and hold.

ASOS 118.025	HOUSTON CENTER 128.6 360.8	UNICOM 122.8 (CTAF) 0
------------------------	--------------------------------------	--



ELEV 14

TDZE 13

132° to RW13

GP 3.00° TCH 40

4 NM Holding Pattern

NAPTE

GUDFY

FIGER 1.7 NM to RW13

*0.7 NM to RW13

*580

*LNAV only.

2100

312°

132°

1700

8 NM

3.5 NM

1 NM

0.7

CATEGORY	A	B	C	D
LPV DA		263-7/8	250 (300-7/8)	
LNAV/VNAV DA		263-7/8	250 (300-7/8)	
LNAV MDA	280-1	267 (300-1)	280-7/8	267 (300-7/8)
CIRCLING	460-1 446 (500-1)	480-1 466 (500-1)	480-1 1/2 466 (500-1 1/2)	580-2 566 (600-2)

REIL Rwys 13 and 31

MIRL Rwy 13-31 **0**