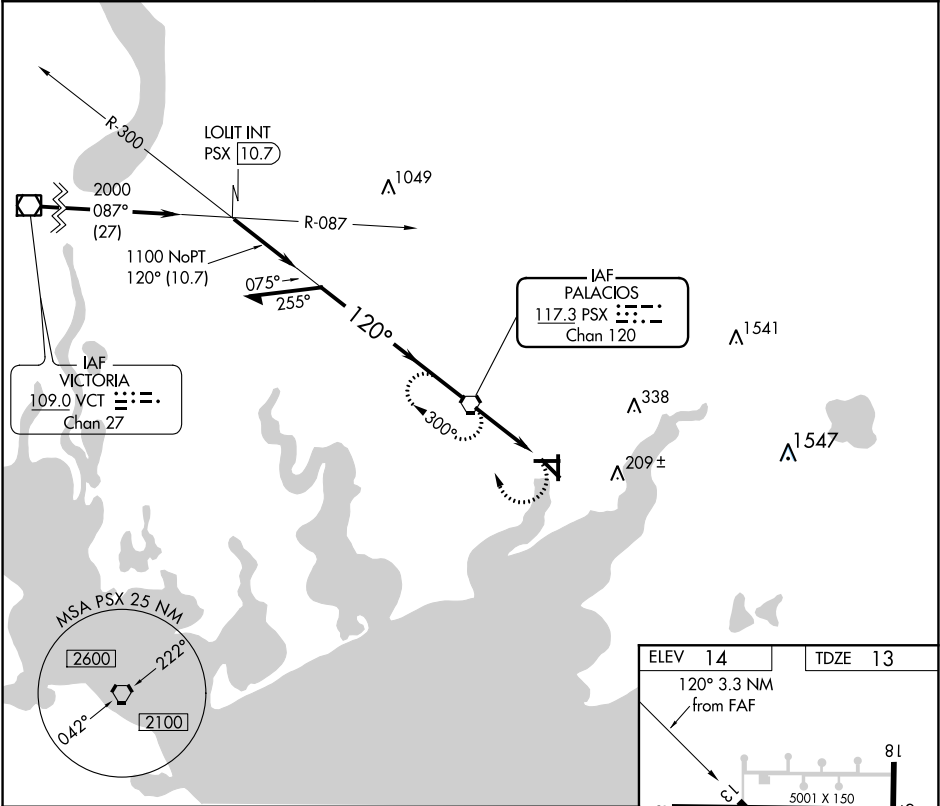


VORTAC PSX	APP CRS	Rwy Idg	5001
117.3	120°	TDZE	13
Chan 120		Apt Elev	14

VOR RWY 13
PALACIOS MUNI (PSX)

<p>▼ Rwy 13 helicopter visibility reduction below ¼ SM NA. Circling Rwy 8, 18, 26, 31, 36 NA at night.</p>	<p>MISSED APPROACH: Climbing right turn to 2000 direct PSX VORTAC and hold.</p>
---	---

ASOS 118.025	HOUSTON CENTER 128.6 360.8	UNICOM 122.8 (CTAF) 0
-----------------	-------------------------------	--------------------------



<p>Remain within 10 NM</p> <p>PSX VORTAC</p> <p>2000</p> <p>300°</p> <p>120°</p> <p>1100</p> <p>3.02° TCH 40</p> <p>PSX 2.1</p> <p>PSX 3.3</p> <p>2.1 NM</p> <p>1.2</p>				
CATEGORY	A	B	C	D
S-13	380-1	367 (400-1)		380-1¼ 367 (400-1¼)
CIRCLING	460-1 446 (500-1)	480-1 466 (500-1)	480-1½ 466 (500-1½)	580-2 566 (600-2)

ELEV 14	TDZE 13
120° 3.3 NM from FAF	
REIL Rwys 13 and 31 MIRL Rwy 13-31 0	
FAF to MAP 3.3 NM	
Knots	60 90 120 150 180
Min:Sec	3:18 2:12 1:39 1:19 1:06