

WAAS CH 82709 W13A	APP CRS 128°	Rwy ldg 9111 TDZE 115 Apt Elev 115
----------------------------------------	------------------------	---------------------------------------------------------------

RNAV (GPS) RWY 13L

VICTORIA RGNL (VCT)

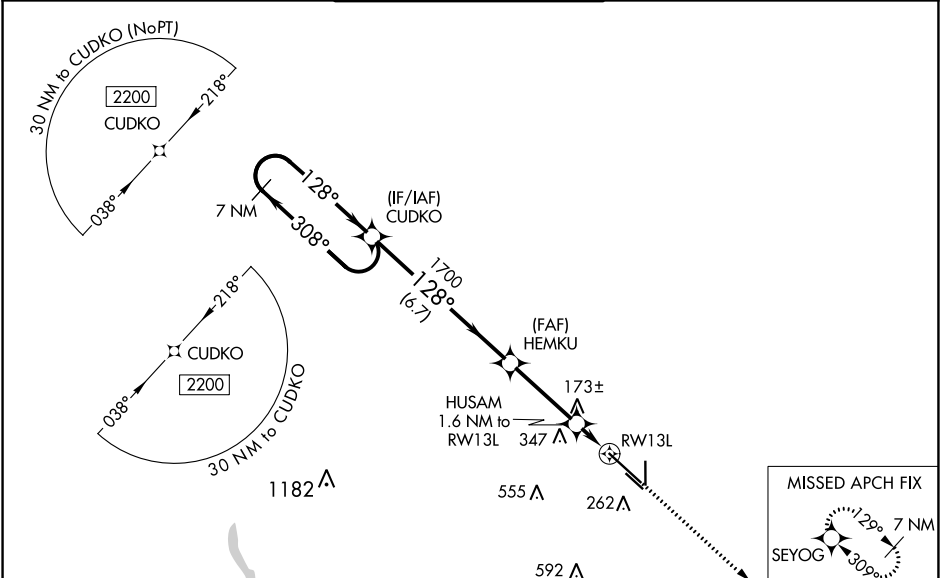
Baro-VNAV NA when using Port Lavaca altimeter setting. For uncompensated Baro-VNAV systems, LNAV/VNAV NA below -15°C (5°F) or above 43°C (109°F). When local altimeter setting not received, use Port Lavaca altimeter setting and increase all DA 52 feet and all MDA 60 feet. Increase LNAV Cats C/D/E visibility to ¾ mile. DME/DME RNP-0.3 NA. VDP NA with Port Lavaca altimeter setting. For inop MALSR, increase LPV and LNAV/VNAV Cat E visibility to ¾ mile and LNAV Cat E visibility to 1 mile. For inop MALSR when using Port Lavaca altimeter setting, increase LPV Cat E visibility to ¾ mile, LNAV/VNAV all Cats visibility to 1 mile and LNAV Cats C/D/E visibility to 1½ mile.

MALSR

MISSED APPROACH:

Climb to 2200
direct SEYOG
and hold.

ATIS 119.025	HOUSTON CENTER 135.05 353.6	VICTORIA TOWER ★ 126.075 (CTAF) 0 257.95	GND CON 120.525 239.25	UNICOM 122.7
------------------------	---------------------------------------	----------------------------------------------------	----------------------------------	------------------------



<div>7 NM Holding Pattern</div> <div>2200 ← 308° 128° →</div> <div>GP 3.00° TCH 53</div> <div>CUDKO</div> <div>HEMKU</div> <div>HUSAM 1.6 NM to RW13L</div> <div>2200</div> <div>SEYOG</div> <div>128° to RW13L</div> <div>1700</div> <div>*0.9 NM to RW13L</div> <div>*660</div> <div>RW13L</div> <div>6.7 NM</div> <div>3.2 NM</div> <div>0.8</div> <div>0.9 NM</div>					
CATEGORY	A	B	C	D	E
LPV DA	315-½ 200 (200-½)				
LNAV/VNAV DA	365-½ 250 (300-½)				
LNAV MDA	440-½ 325 (400-½)				
CIRCLING	580-1 465 (500-1)	580-1½ 465 (500-1½)	680-2 565 (600-2)	NA	

ELEV 115

D TDZE 115

SC-5, 03 DEC 2020 to 31 DEC 2020

SC-5, 03 DEC 2020 to 31 DEC 2020