

LOC/DME I-BPT	APP CRS	Rwy Idg	6750
110.15	116°	TDZE	15
Chan 38(Y)		Apt Elev	15

ILS or LOC RWY 12

JACK BROOKS RGNL (BPT')

DME or RADAR required.

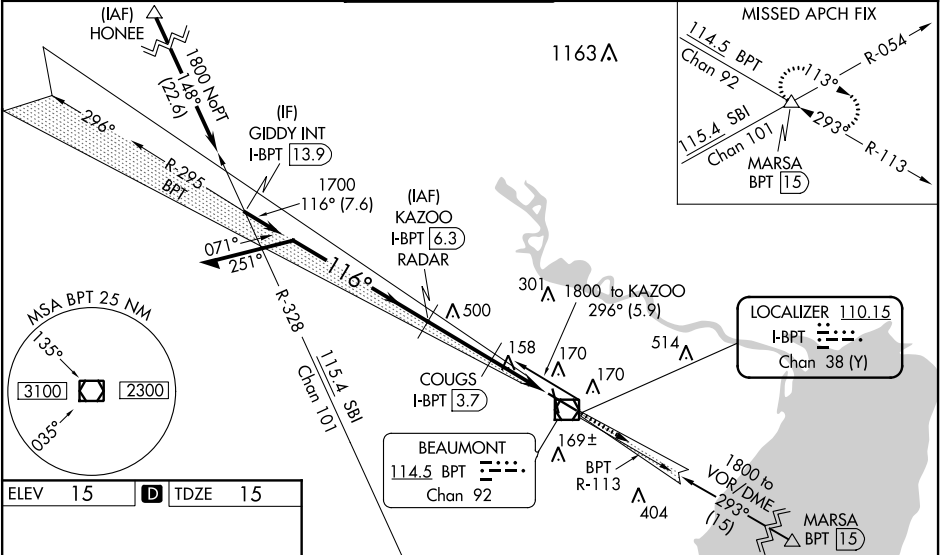
When local altimeter setting not received, use Orange County altimeter setting: increase S-ILS 12 DA to 246 feet; increase all MDAs 40 feet. COUGS Fix Minimums: increase S-LOC 12 Cat C/D/E visibility to RVR 5000 feet. For inop MALS, increase S-ILS 12 Cat E visibility to RVR 4000, S-LOC 12 Cat E visibility to 2½ miles, COUGS Fix Minimums increase S-LOC 12 Cat C/D/E visibility to 1¾ mile. For inop MALS, when using Orange County altimeter setting, increase S-ILS 12 Cat E visibility to RVR 4000, S-LOC 12 Cat C/D/E to 2½ miles. COUGS Fix Minimums: increase S-LOC 12 Cat C/D/E to 1¾ miles. VDP NA when using Orange County altimeter setting.

**RVR 1800 authorized with use of FD or AP or HUD to DA, NA when using Orange County altimeter setting.

MALS

MISSED APPROACH:
Climb to 3000 on BPT VOR/DME R-113 to MARSA INT/BPT 15 DME and hold.

ATIS 126.3	HOUSTON APP CON 121.3 377.1	BEAUMONT TOWER* 119.5 (CTAF) 0	GND CON 124.85	CLNC DEL 118.3	UNICOM 122.95
---------------	--------------------------------	-----------------------------------	-------------------	-------------------	------------------



ELEV 15	D	TDZE 15
116° 5.1 NM from FAF	91A	TWR 126
6750 X 150	5070 X 150	34
REIL Rwy 16, 30 and 34	HIRL Rwy 12-30, 16-34	FAF to MAP 5.1 NM
Knots 60 90 120 150 180	Min:Sec 5:06 3:24 2:33 2:02 1:42	

Use I-BPT DME when on the localizer course.

Remain within 10 NM

*1800

296°

116°

1700

GS 3.00° TCH 52

*Cat E procedure turn NA.

2.7 NM

1.2 NM

1.2 NM

#820

COUGS I-BPT 3.7

KAZOO I-BPT 6.3 RADAR

3000 BPT R-113

MARSA

#LOC only.

#I-BPT 2.5

I-BPT 1.3

CATEGORY	A	B	C	D	E
S-ILS 12**	215/24 200 (200-½)				
S-LOC 12	820/24 805 (900-½)	820/40 805 (900-¾)	820-17 805 (900-1¾)		
COUGS FIX MINIMUMS (DME REQUIRED)					
S-LOC 12	460/24 445 (500-½)		460/45 445 (500-¾)		