

WAAS CH <b>99715</b> <b>W12A</b>	APP CRS <b>116°</b>	Rwy Idg TDZE Apt Elev	<b>6750</b> <b>15</b> <b>15</b>
--	------------------------	-----------------------------	---------------------------------------

# RNAV (GPS) RWY 12

## JACK BROOKS RGNL (BPT)

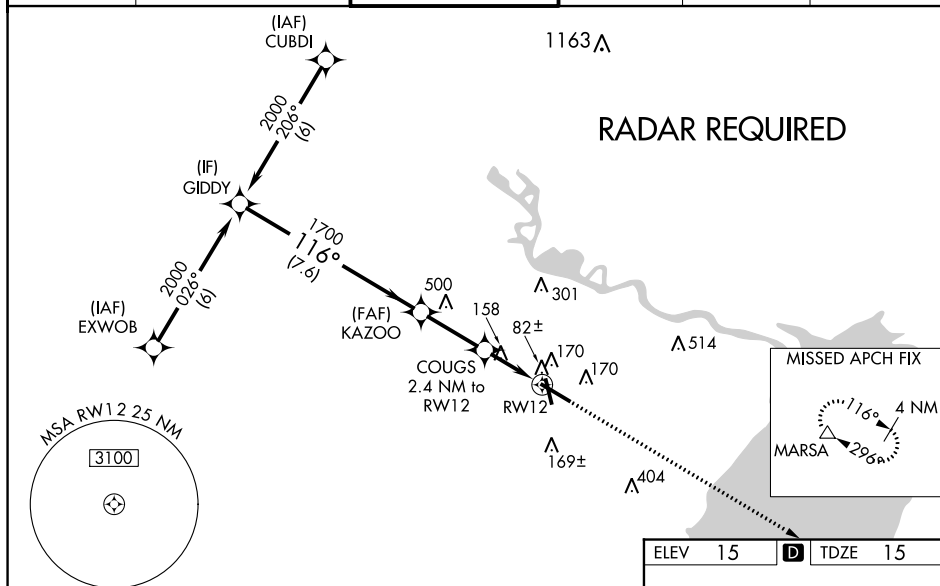
**▼** Baro-VNAV NA when using Orange County altimeter setting. For uncompensated Baro-VNAV systems, LNAV/VNAV NA below -15°C (5°F) or above 49°C (120°F), DME/DME RNP-0.3 NA. When local altimeter setting not received, use Orange County altimeter setting and increase all DA 32 feet and all MDA 40 feet, increase LNAV/VNAV Cat E, LNAV Cat E and Circling Cat E visibility ¼ mile. For inoperative MALSR, increase LPV Cat E visibility to RVR 4000, LNAV/VNAV Cat E to RVR 6000 and LNAV Cat E to 1½ miles. For inoperative MALSR when using Orange County altimeter setting, increase LPV Cat E visibility to RVR 4000, LNAV/VNAV Cat E to 1½ miles, and LNAV Cat E to 1¾ miles. VDP NA when using Orange County altimeter setting. \*\*RVR 1800 authorized with use of FD or AP or HUD to DA (NA when using Orange County altimeter setting).

MALSR

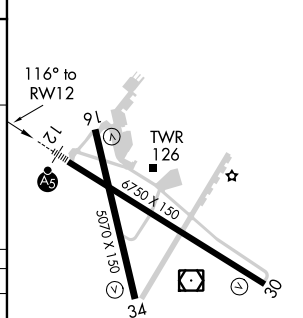
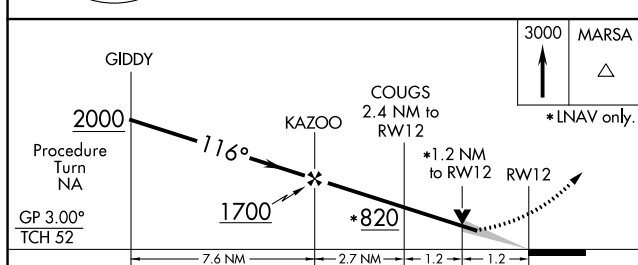


**MISSED APPROACH.**  
Climb to 3000 direct  
MARSA and hold.

ATIS 126.3	HOUSTON APP CON 121.3 377.1	BEAUMONT TOWER★ 119.5 (CTAF) 0	GND CON 124.85	CLNC DEL 118.3	UNICOM 122.95
---------------	--------------------------------	-----------------------------------	-------------------	-------------------	------------------



ELEV	15	<b>D</b>	TDZE	15
------	----	----------	------	----



CATEGORY	A	B	C	D	E
LPV DA **	215/24 200 (200- <sup>1</sup> / <sub>2</sub> )				
LNAV/ VNAV DA	375/40 360 (400- <sup>3</sup> / <sub>4</sub> )				
LNAV MDA	460/24 445 (500- <sup>1</sup> / <sub>2</sub> )	460/40 445 (500- <sup>3</sup> / <sub>4</sub> )	460/50 445 (500-1)		
CIRCLING	480-1 465 (500-1)	480-1 <sup>1</sup> / <sub>2</sub> 465 (500-1 <sup>1</sup> / <sub>2</sub> )	580-2 565 (600-2)	820-2 <sup>3</sup> / <sub>4</sub> 805 (900-2 <sup>3</sup> / <sub>4</sub> )	

REIL Rwys 16, 30 and 34 **L**  
HIRL Rwys 12-30, 16-34 **L**