


LOC I-LFK 111.3	APP CRS 073°	Rwy Idg TDZE Apt Elev	5400 287 296
---------------------------	------------------------	-----------------------------	---

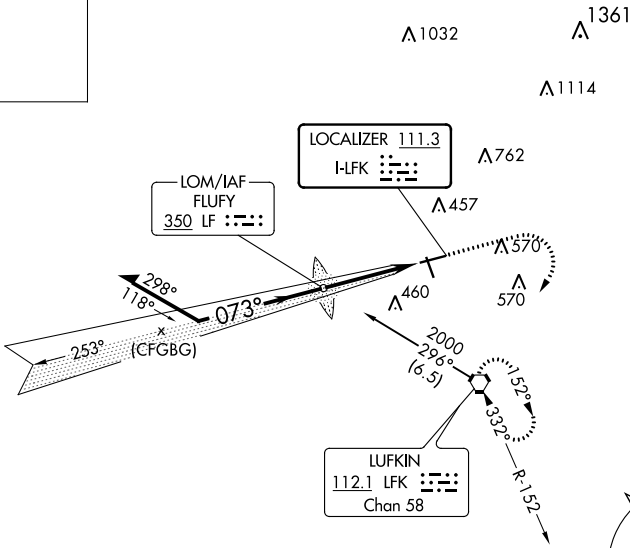

ILS or LOC RWY 7
ANGELINA COUNTY (L'FK)

 Circling Rwy 16, 25 NA at night.		MISSED APPROACH: Climb to 800 then climbing right turn to 2000 direct LFK VORTAC and hold, continue climb-in-hold.
--	---	--

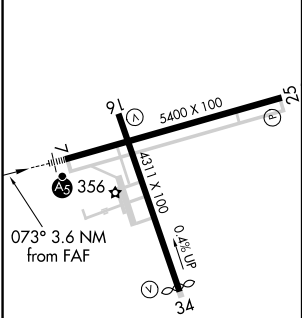
ASOS 120.625	HOUSTON CENTER 125.175 285.575	UNICOM 123.0 (CTAF) 0
------------------------	--	---------------------------------

ALTERNATE MISSED APCH

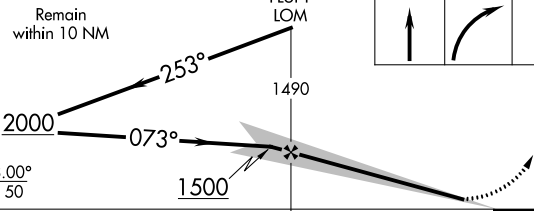

FLUFY
350 LF : :: :



ELEV 296	TDZE 287
----------	----------



MIRL Rwy 7-25 and 16-34 0					
FAF to MAP 3.6 NM					
Knots	60	90	120	150	180
Min:Sec	3:36	2:24	1:48	1:26	1:12

Procedure NA for arrival on LFK VORTAC airway radials 245 CW 354.				
				
CATEGORY	A	B	C	D
S-ILS 7	537-1/2 250 (300-1/2)			
S-LOC 7	680-1/2	393 (400-1/2)	680-5/8	393 (400-5/8)
 CIRCLING	740-1	760-1	880-1 1/2	1140-2 3/4
	444 (500-1)	464 (500-1)	584 (600-1 1/2)	844 (900-2 3/4)