

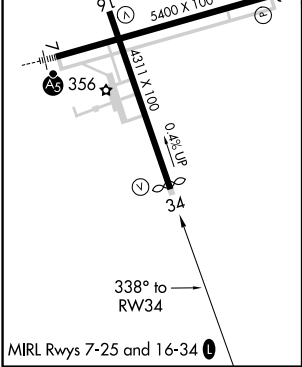
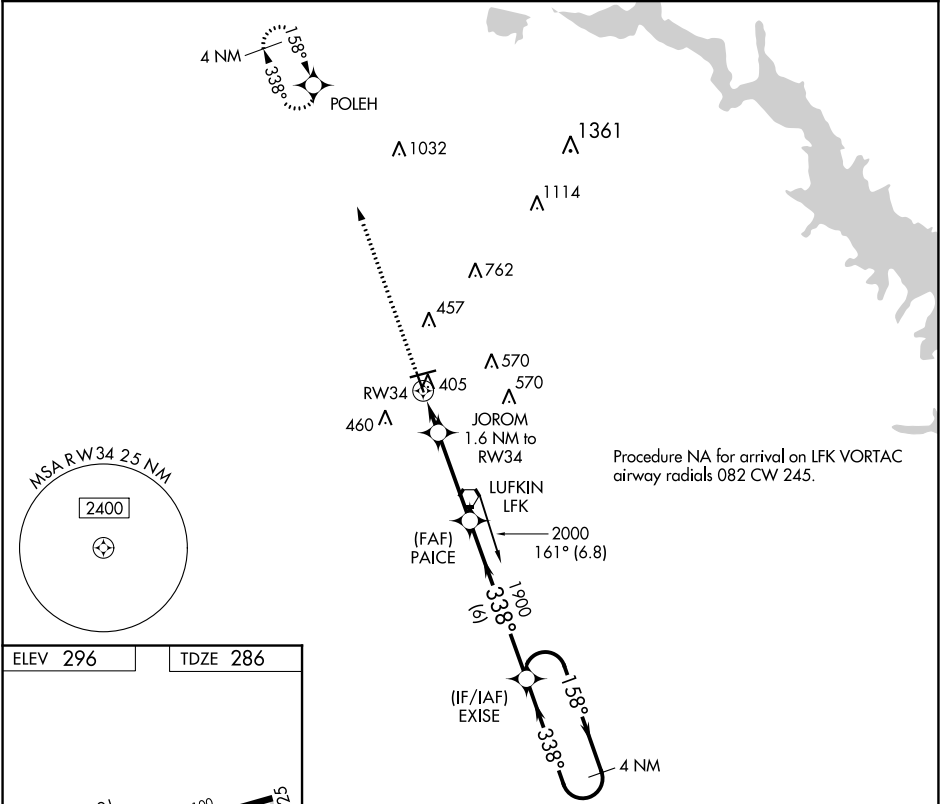
APP CRS	Rwy Idg	4204
338°	TDZE	286
	Apt Elev	296

RNAV (GPS) RWY 34

ANGELINA COUNTY (LKF)

<div><div>▼</div><div>▲</div></div> <div>DME/DME RNP-0.3 NA. Circling Rwy 16, 25 NA at night. Rwy 34 helicopter visibility reduction below ¾ SM NA.</div>	MISSED APPROACH: Climb to 2100 direct POLEH and hold.
---	---

ASOS 120.625	HOUSTON CENTER 125.175 285.575	UNICOM 123.0 (CTAF) 0
-----------------	-----------------------------------	--------------------------



2100 POLEH	JOROM 1.6 NM to RW34	PAICE	EXISE	4 NM Holding Pattern
1 NM to RW34	3.00° TCH 55	1900	2000	158° 338°
840	3.3 NM	6 NM		
1 NM	0.6			
CATEGORY	A	B	C	D
LNAV MDA	660-1	374 (400-1)		
CIRCLING	740-1 444 (500-1)	760-1 464 (500-1)	880-1½ 584 (600-1½)	1140-2¾ 844 (900-2¾)

SC-5, 03 DEC 2020 to 31 DEC 2020

SC-5, 03 DEC 2020 to 31 DEC 2020