


WAAS CH <b>50105</b> <b>W07A</b>	APP CRS <b>073°</b>	Rwy Idg TDZE Apt Elev	<b>5400</b> <b>287</b> <b>296</b>
--	------------------------	-----------------------------	---

RNAV (GPS) RWY 7  
ANGELINA COUNTY (LKF)

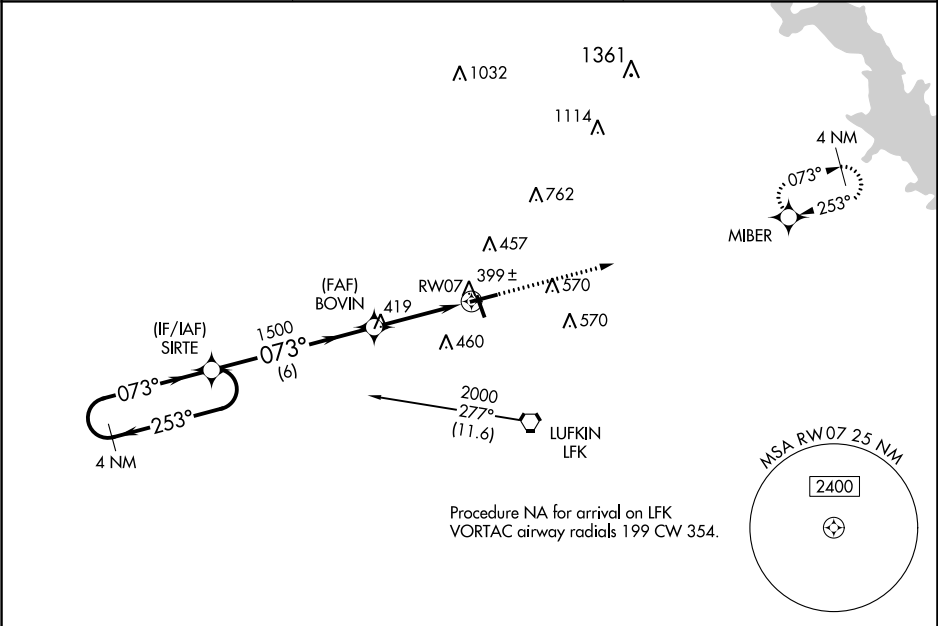
**▼** For uncompensated Baro-VNAV systems, LNAV/VNAV NA below -4°C (25°F) or above 54°C (130°F). DME/DME RNP-0.3 NA. Circling Rwy 16, 25 NA at night.

**MALSR**



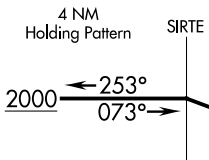
**MISSED APPROACH:** Climb to 2000 direct MIBER and hold.

ASOS <b>120.625</b>	HOUSTON CENTER <b>125.175 285.575</b>	UNICOM <b>123.0 (CTAF) 0</b>
------------------------	--	---------------------------------



**ELEV 296**      **TDZE 287**

**4 NM Holding Pattern**



**SIRTE**

**2000** ← 253° / 073° →

**GP 3.00° TCH 50**

**BOVIN** 1500

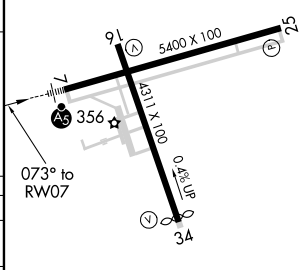
**RW07**

**\*1 NM to RW07**

**\*LNAV only.**

**6 NM**      **2.7 NM**      **1 NM**

CATEGORY	A	B	C	D
LPV DA	537-½ 250 (300-½)			
LNAV/VNAV DA	563-½ 276 (300-½)			
LNAV MDA	660-½ 373 (400-½)	660-⅝ 373 (400-⅝)		
<b>CIRCLING</b>	740-1 444 (500-1)	760-1 464 (500-1)	880-1½ 584 (600-1½)	1140-2¾ 844 (900-2¾)



**073° to RW07**

**MRL Rwy 7-25 and 16-34 0**

SC-5, 03 DEC 2020 to 31 DEC 2020

SC-5, 03 DEC 2020 to 31 DEC 2020