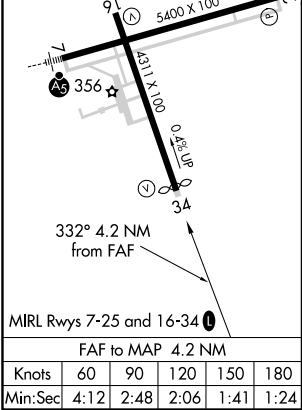
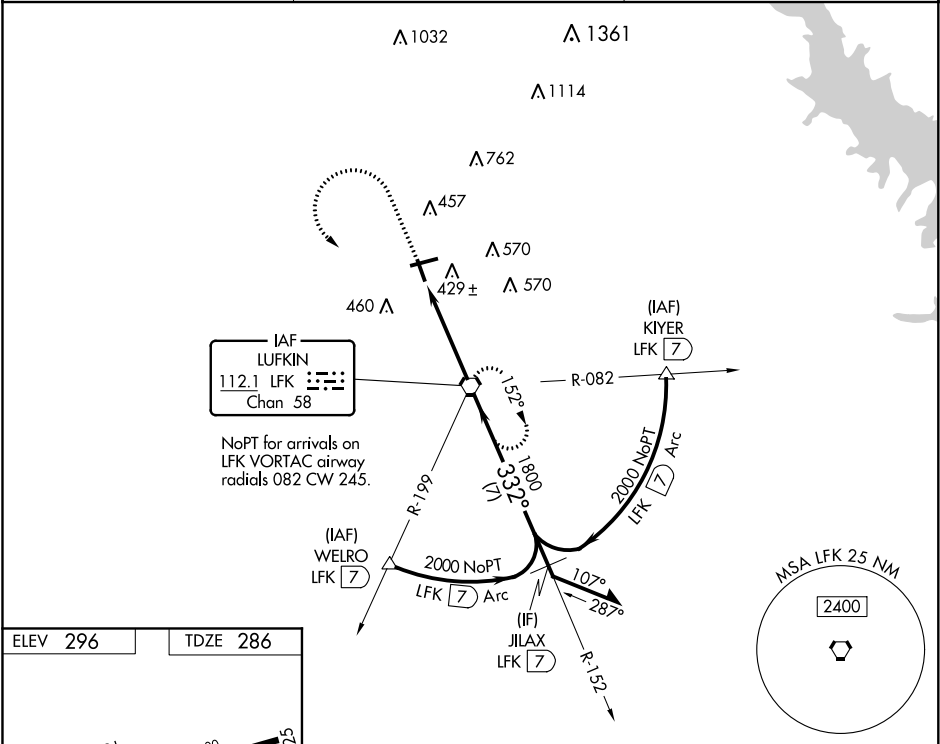


VORTAC LFK	APP CRS	Rwy Idg	4204
112.1	332°	TDZE	286
Chan 58		Apt Elev	296

VOR RWY 34  
ANGELINA COUNTY (L'F'K)

<p>▼ ▲</p> <p>Rwy 34 helicopter visibility reduction below 1 SM NA. Straight-In Rwy 34 NA at night, Circling to Rwy 16, 25, 34 NA at night.</p>	<p>MISSED APPROACH: Climb to 900 then climbing left turn to 2000 direct LFK VORTAC and hold.</p>
---	--

ASOS 120.625	HOUSTON CENTER 125.175 285.575	UNICOM 123.0 (CTAF) 0
-----------------	-----------------------------------	--------------------------



900	2000	LFK	LFK VORTAC	Remain within 10 NM
VGSi and descent angles not coincident (VGSi Angle 3.00/TCH 55).				
LFK 4.2				
≤ 3.34° TCH 55				
4.2 NM				
CATEGORY	A	B	C	D
S-34	680-1	394 (400-1)	680-1½	394 (400-1½)
☐ CIRCLING	740-1 444 (500-1)	760-1 464 (500-1)	880-1½ 584 (600-1½)	1140-2¾ 844 (900-2¾)

SC-5, 03 DEC 2020 to 31 DEC 2020

SC-5, 03 DEC 2020 to 31 DEC 2020