

| | | |
|--|------------------------|---|
| WAAS CH 45603 W35A | APP CRS 348° | Rwy ldg 6700 TDZE 152 Apt Elev 152 |
|--|------------------------|---|

RNAV (GPS) RWY 35L

DAVID WAYNE HOOKS MEMORIAL (DWH)

RNP APCH.

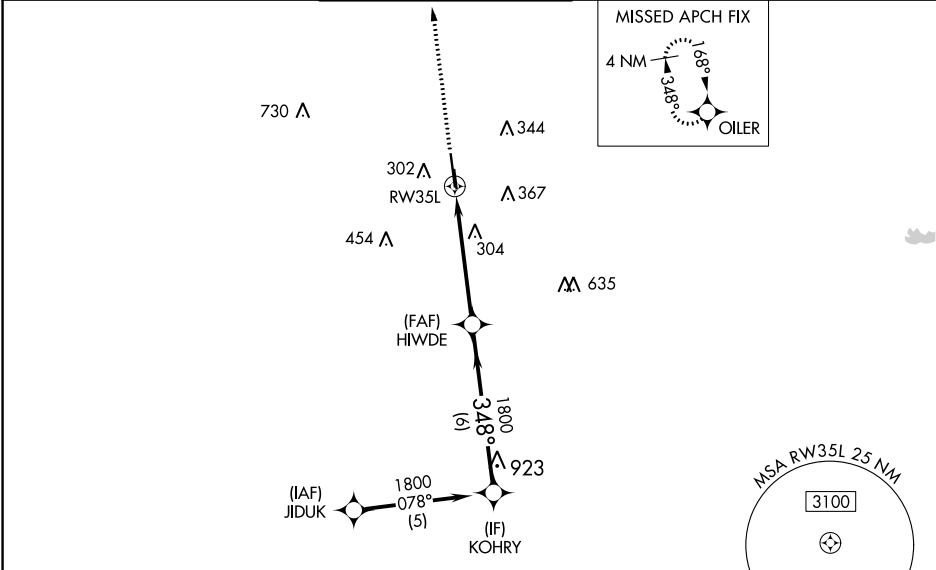
▼

⚠

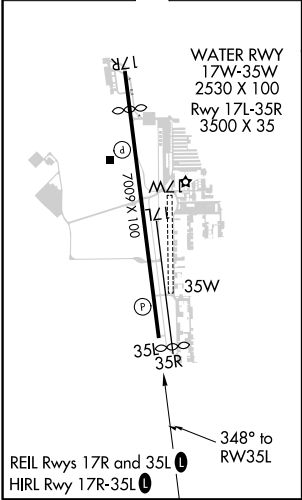
Baro-VNAV and VDP NA when using George Bush Intercontinental/Houston altimeter setting. For uncompensated Baro-VNAV systems, LNAV/VNAV NA below -4°C (25°F) or above 54°C (130°F). When local altimeter setting not received, use George Bush Intercontinental/Houston altimeter setting and increase all DA 36 feet and all MDA 40 feet, increase LPV and LNAV/VNAV visibility all Cats ½ mile, LNAV visibility Cats C/D ¼ mile. Rwy 35L helicopter visibility reduction below ¾ SM NA. Circling NA to Rwys 17W and 35W.

MISSED APPROACH:
Climb to 2000 direct OILER and hold.

| | | | | | |
|------------------------|---------------------------------------|---|-------------------------------|---------------------------|-------------------------|
| ATIS 128.375 | HOUSTON APP CON 119.7 281.4 | HOOKESTOWER★ 127.4 354.1 (EAST) 118.4 (CTAF) 0 354.1 (WEST) | GND CON 121.8 239.0 | CLNC DEL 119.45 | UNICOM 122.95 |
|------------------------|---------------------------------------|---|-------------------------------|---------------------------|-------------------------|



| | | |
|-----------------|----------|-----------------|
| ELEV 152 | D | TDZE 152 |
|-----------------|----------|-----------------|



| | | | | | |
|---------------|-------------------|--|---------------------|-------------------|--------------|
| 2000 | OILER | VGSI and RNAV glidepath not coincident (VGSI Angle 3.00/TCH 41). | | | |
| *LNAV only. | *1.2 NM to RWY35L | HIWDE 1800 | KOHRY 1800 | GP 3.00° TCH 45 | |
| 1.2 NM | | 3.8 NM | | 6 NM | |
| CATEGORY | A | B | C | D | |
| LPV DA | 451-1 | | 299 (300-1) | | |
| LNAV/ VNAV DA | 552-1½ | | 400 (400-1½) | | |
| LNAV MDA | 560-1 408 (500-1) | | 560-1½ | | 408 (500-1½) |
| CIRCLING | 640-1 488 (500-1) | 660-1 508 (600-1) | 680-1½ 528 (600-1½) | 760-2 608 (700-2) | |

SC-5, 03 DEC 2020 to 31 DEC 2020

SC-5, 03 DEC 2020 to 31 DEC 2020