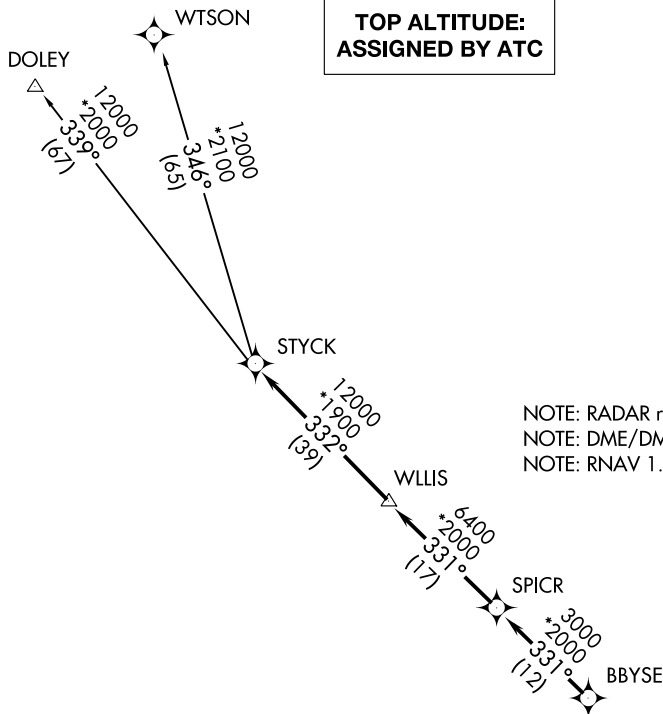


STYCK SEVEN DEPARTURE (RNAV)

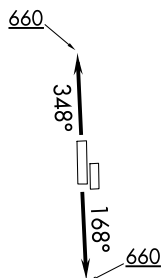
HOUSTON, TEXAS



NOTE: RADAR required.
NOTE: DME/DME/IRU or GPS required.
NOTE: RNAV 1.

TAKEOFF MINIMUMS

Rwys 17L, 35R: NA-Environmental.
Waterways 17, 35: NA-Air traffic.
Rwys 17R, 35L: Standard with minimum
climb of 500' per NM to 660.



NOTE: Chart not to scale.

DEPARTURE ROUTE DESCRIPTION

TAKEOFF RWY 17R: Climb heading 168° to 660 for RADAR vectors to BBYSE, thence. . .

TAKEOFF RWY 35L: Climb heading 348° to 660 for RADAR vectors to BBYSE, thence. . .

...on track 331° to SPICR, then on track 331° to WLLIS, then on track 332° to STYCK, then on (transition). Maintain ATC assigned altitude. Expect filed altitude 10 minutes after departure.

DOLEY TRANSITION (STYCK7.DOLEY)

WTSON TRANSITION (STYCK7.WTSON)

STYCK SEVEN DEPARTURE (RNAV)

HOUSTON, TEXAS

DAVID WAYNE HOOKS MEMORIAL (DWH)

(STYCK7.STYCK) 25APR19

SC-5, 03 DEC 2020 to 31 DEC 2020