

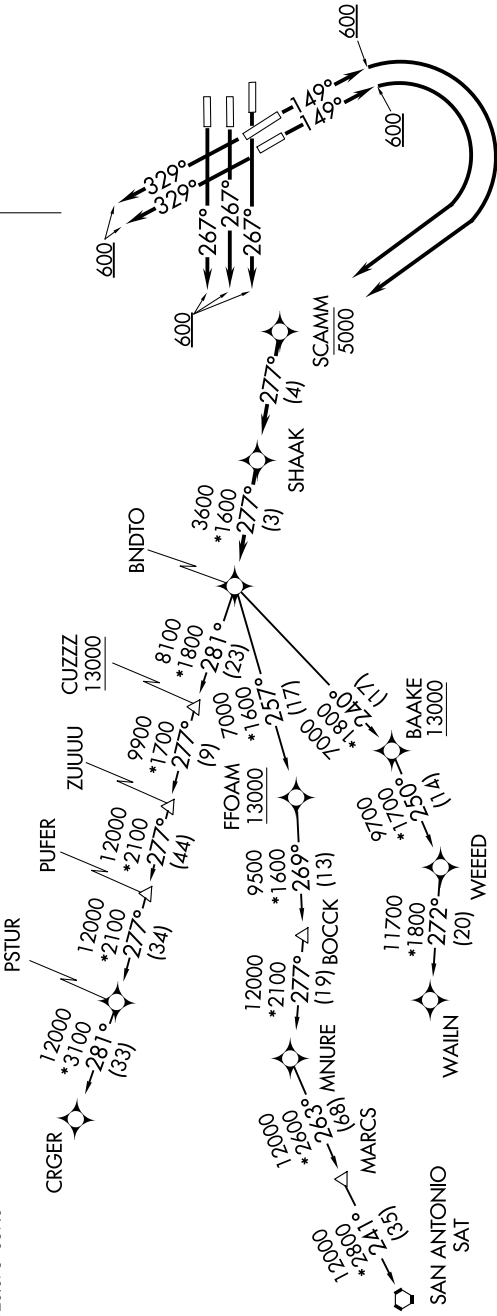
SC-5, 03 DEC 2020 to 31 DEC 2020

D-ATIS  
124.05  
CINC DEL  
128.1  
CPDC  
GND CON  
118.575 (Rwys 8L/R, 26L/R, 9, 27)  
121.7 (Rwys 15L/R, 33L/R)  
HOUSTON TOWER  
120.725 290.2 (Rwys 8L, 26R)  
125.35 290.2 (Rwys 8R, 26L)  
127.3 288.25 (Rwys 15L/R, 33L/R)  
135.15 290.2 (Rwys 9, 27)  
HOUSTON DEP CON  
126.675 339.8

TOP ALTITUDE:  
16000

**TAKEOFF MINIMUMS**  
Rwys 15L/R, 26L/R, 27, 33L/R: Standard with  
minimum climb of 500' per NM to 1200.

**NOTE:** RADAR required.  
**NOTE:** DME/DME/IRU or GPS required.  
**NOTE:** RNAV 1.  
**NOTE:** For use during west flow at IAH, for east flow  
file the PITZZ DEPARTURE.



(NARRATIVE ON FOLLOWING PAGE)

SC-5, 03 DEC 2020 to 31 DEC 2020