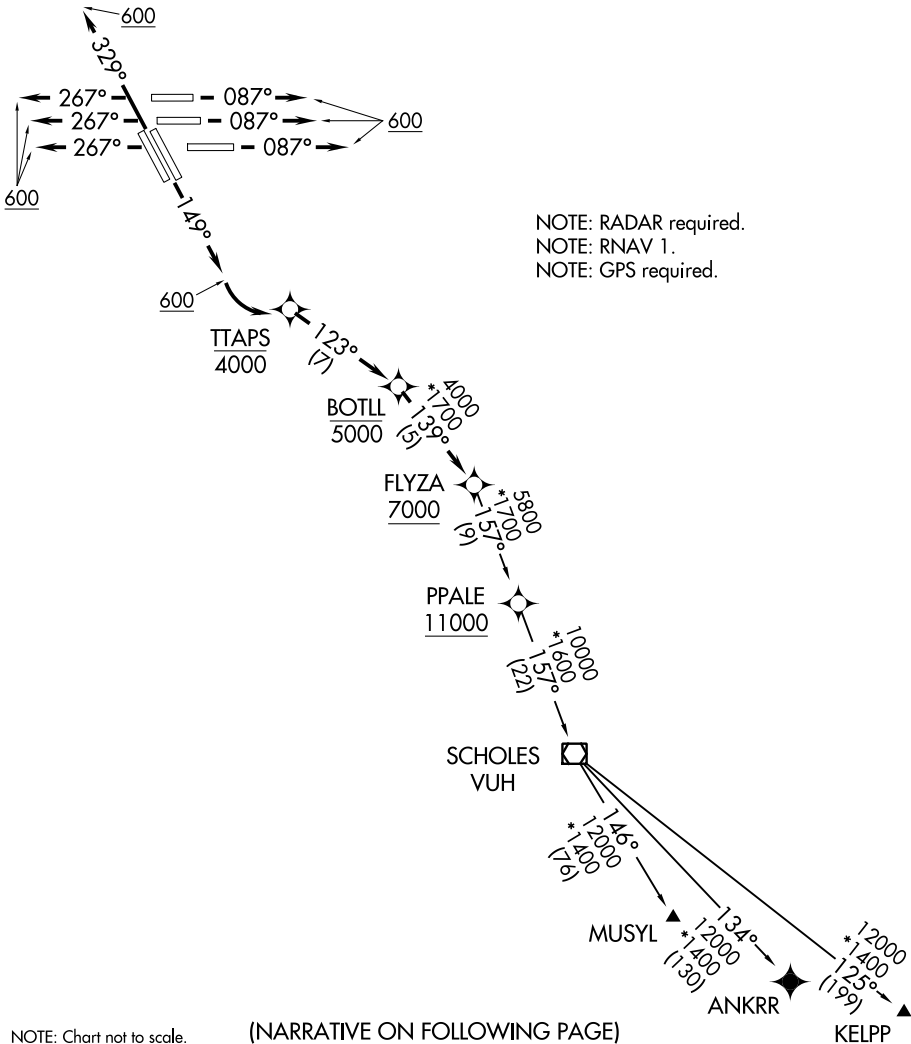


D-ATIS  
124.05  
CLNC DEL  
128.1  
CPDLC  
GND CON  
118.575 (Rwys 8L/R, 26L/R, 9, 27)  
121.7 (Rwys 15L/R, 33L/R)  
HOUSTON TOWER  
120.725 290.2 (Rwys 8L, 26R)  
125.35 290.2 (Rwys 8R, 26L)  
127.3 288.25 (Rwys 15L/R, 33L/R)  
135.15 290.2 (Rwys 9, 27)  
HOUSTON DEP CON  
127.125 269.075

TOP ALTITUDE:  
16000

TAKEOFF MINIMUMS  
Rwys 8L/R, 9, 15L/R, 26L/R, 27, 33L/R:  
Standard with minimum climb of 500' per NM to 800.



SC-5, 03 DEC 2020 to 31 DEC 2020

SC-5, 03 DEC 2020 to 31 DEC 2020