

LAAS	APP CRS	Rwy Idg	10000
CH 22306	267°	TDZE	87
RPI GGHI		Apt Elev	96

GLS RWY 27
GEORGE BUSH INTERCONTINENTAL/HOUSTON (IAH)

NA For inop ALSF, increase GLS all Cats visibility to RVR 4000. Simultaneous approach authorized with Rwy 26L and Rwy 26R. DME/DME RNP-0.3 NA. GPS required. Use of FD or AP providing RNAV track guidance required during simultaneous operations. Autoland approach NA.

ALSF-2



MISSED APPROACH: Climb to 560 then climbing left turn to 3100 direct TICOY and hold.

D-ATIS 124.05	HOUSTON APP CON 120.05 379.1 EAST 124.35 316.15 WEST	HOUSTON TOWER 135.15 290.2	GND CON 118.575	CLNC DEL 128.1	CPDLC
-------------------------	--	--------------------------------------	---------------------------	--------------------------	-------

RADAR REQUIRED

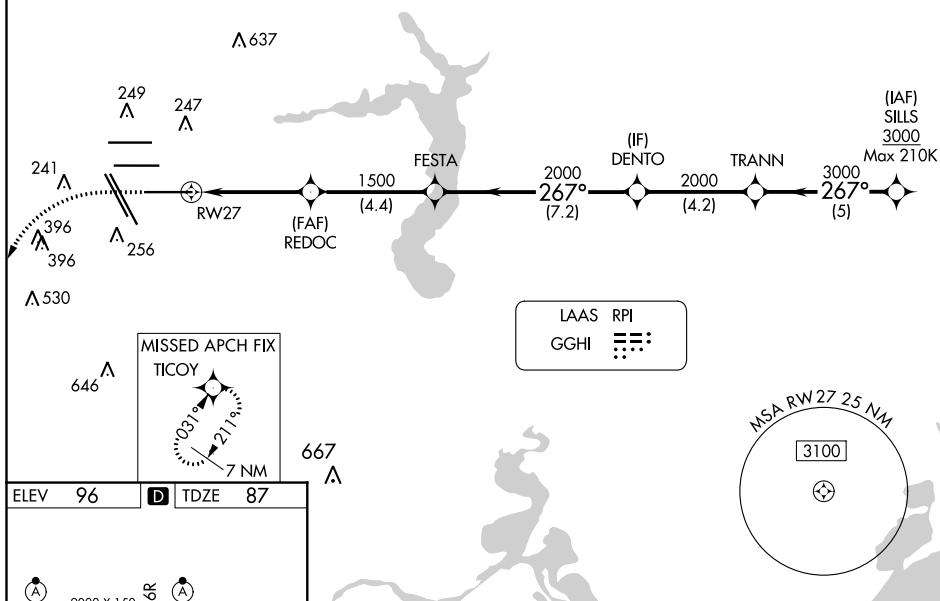


Diagram illustrating the TDZ/CL (Touchdown Zone/Center Line) for Runways 8R, 8L, 15R, 26R, 26L, 27, and 33L. The diagram shows the layout of these runways, including their dimensions (e.g., 9000 x 150, 9402 x 150, 10000 x 150, 1200 x 150) and the location of the Tower (TWR 422). It also indicates the 267° to RW27 and the 33R runway. The diagram is labeled with 'TDZ/CL Rwy' and 'HIRL all Rwy'.

560
↑

3100
↘

TICOY
✦

VGSI and GLS glidepath not coincident
(VGSI Angle 3.00/TCH 70).

GLS unusable inside DA.

TRANN
SILLS

267°
3000

3000

GP 3.00°
TCH 55

REDOC
1500

FESTA
2000

DENTO
2000

2000

2000

1500

4.3 NM

4.4 NM

7.2 NM

4.2 NM

5 NM

CATEGORY	A	B	C	D	E
GLS	DA				

287/18 200 (200-½)