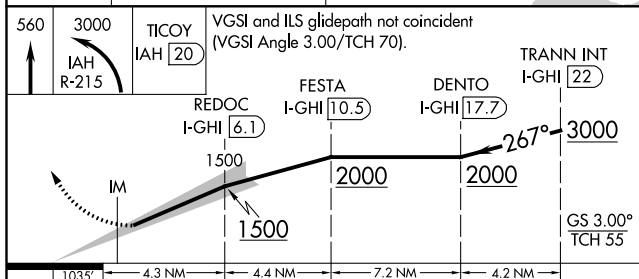
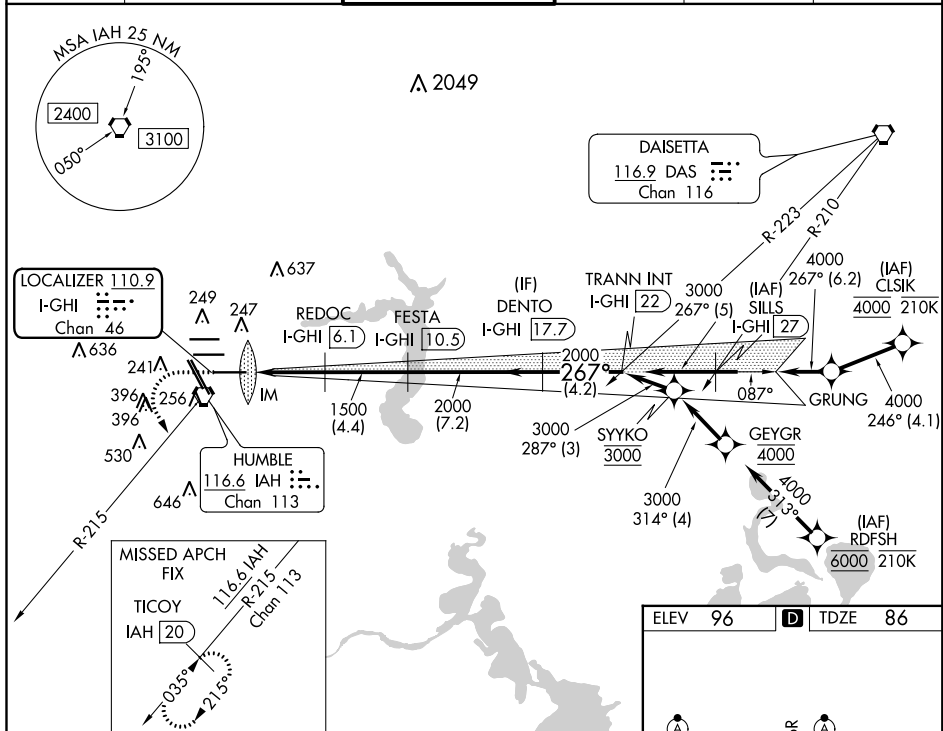


ILS RWY 27 (SA CAT I)
GEORGE BUSH INTERCONTINENTAL/HOUSTON (IAH)

MISSED APPROACH: Climb to 560 then climbing left turn to 3000 on IAH VORTAC R-215 to TICOY/IAH 20 DME and hold.



D-ATIS 124.05	HOUSTON APP CON 120.05 379.1 EAST 124.35 316.15 WEST	HOUSTON TOWER 135.15 290.2	GND CON 118.575	CLNC DEL 128.1	CPDLC
-------------------------	--------------------------------------------------------------------------	--------------------------------------	---------------------------	--------------------------	-------



CATEGORY	A	B	C	D
S-ILS 27	RA 104/14 150 DA 236			

SA CATEGORY I ILS - SPECIAL AIRCREW
& AIRCRAFT CERTIFICATION REQUIRED

