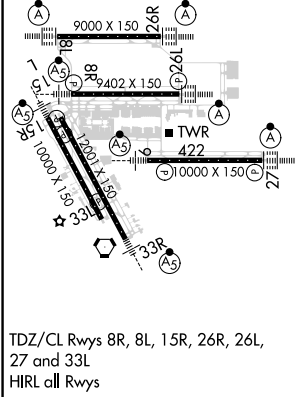
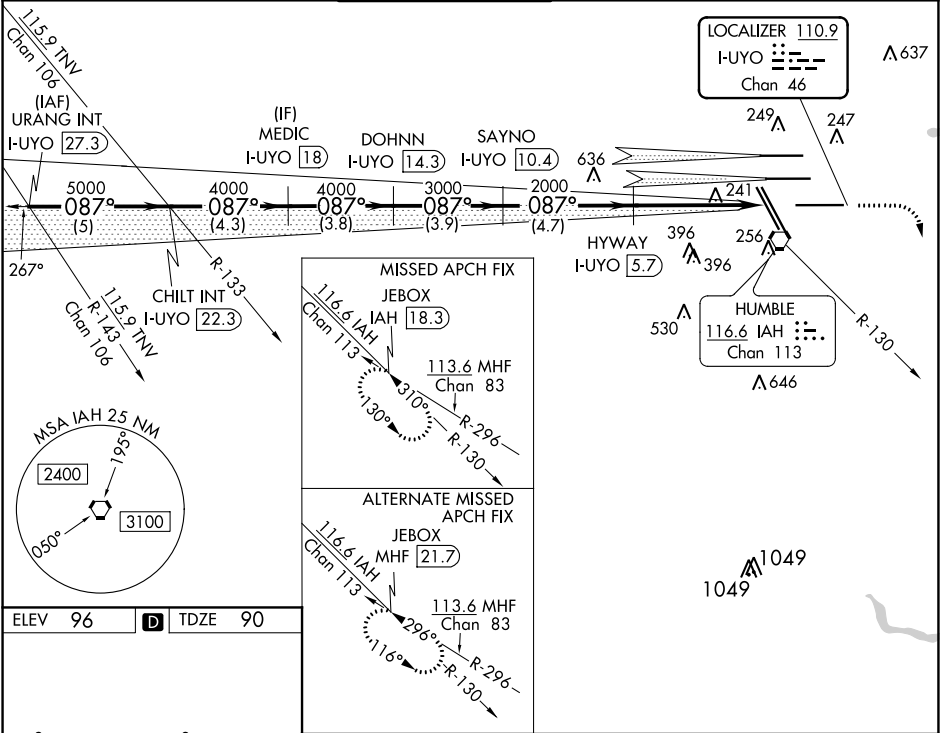


LOC/DME I-UYO	APP CRS	Rwy Idg	10000
110.9	087°	TDZE	90
Chan 46		Apt Elev	96

ILS RWY 9 (SA CAT I & II)
GEORGE BUSH INTERCONTINENTAL/HOUSTON (IAH)

DME required. RADAR required for procedure entry.	MALSR	MISSED APPROACH: Climb to 580 then climbing right turn to 3000 on IAH VORTAC R-130 to JEBOX/IAH 18.3 DME and hold.
Simultaneous approach authorized with Rwy 8L/R. SA CAT I: Requires specific OPSPEC, MSPEC, or LOA approval and use of AUTOLAND or HUD to touchdown. SA CAT II: Reduced lighting: requires specific OPSPEC, MSPEC, or LOA approval and use of AUTOLAND or HUD to touchdown.		

D-ATIS 124.05	HOUSTON APP CON 120.05 379.1 EAST 124.35 316.15 WEST	HOUSTON TOWER 135.15 290.2	GND CON 118.575	CLNC DEL 128.1	CPDLC
------------------	--	-------------------------------	--------------------	-------------------	-------



URANG INT I-UYO [27.3]	CHILT INT I-UYO [22.3]	MEDIC I-UYO [18]	DOHNN I-UYO [14.3]	SAYNO I-UYO [10.4]	HYWAY I-UYO [5.7]	Antenna
5000	5000	4000	4000	3000	2000	2000
GS 3.00°	VGSI and ILS glidepath not coincident (VGSI Angle 3.00/TCH 71.)					
TCH 50						
5 NM	4.3 NM	3.8 NM	3.9 NM	4.7 NM	5.8 NM	1065'
CATEGORY	A	B	C	D		
S-ILS 9	SA CAT I RA 148/14	150	DA 240			
S-ILS 9	SA CAT II RA 98/12	100	DA 190			
SA CATEGORY I and II ILS SPECIAL AIRCREW & AIRCRAFT CERTIFICATION REQUIRED						

SC-5, 03 DEC 2020 to 31 DEC 2020

SC-5, 03 DEC 2020 to 31 DEC 2020