

LOC/DME I-BZU 111.55 Chan 52 (Y)	APP CRS 087°	Rwy Idg TDZE Apt Elev 9000 94 96
--	------------------------	--

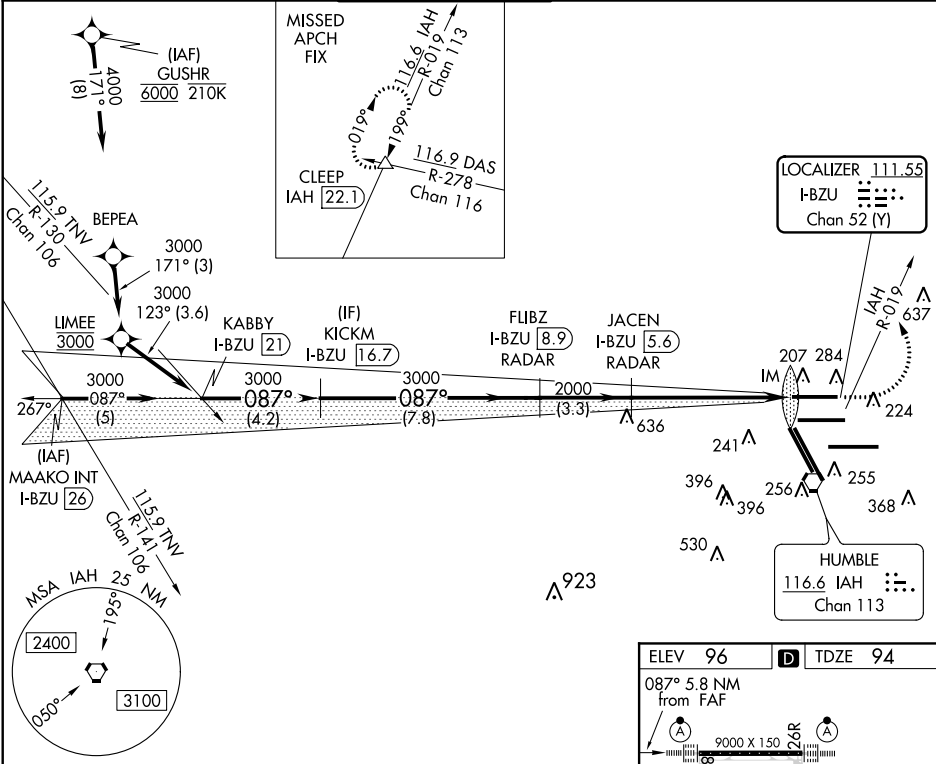
ILS or LOC RWY 8L

GEORGE BUSH INTERCONTINENTAL/HOUSTON (IAH)

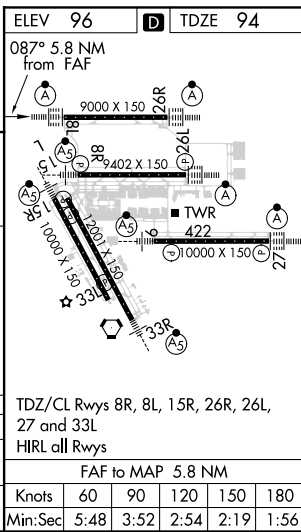
DME required. From GUSHR: RNAV 1-GPS required.

Simultaneous approach authorized with Rwy 8R and Rwy 9.	ALSF-2	MISSED APPROACH: Climb to 600 then climbing left turn to 4000 on IAH VORTAC R-019 to CLEEP INT/IAH 22.1 DME and hold.
--	--------	---

ATIS 124.05	HOUSTON APP CON 120.05 379.1 EAST 124.35 316.15 WEST	HOUSTON TOWER 120.725 290.2	GND CON 118.575	CLNC DEL 128.1	CPDLC
-----------------------	--	---------------------------------------	---------------------------	--------------------------	-------



	*LOC only		600	4000	CLEEP
			↑	IAH R-019	△
	KABBY I-BZU [21]	KICKM I-BZU [16.7]	FLIBZ I-BZU [8.9] RADAR	JACEN I-BZU [5.6] RADAR	I-BZU DME ANTENNA I-BZU [1.2] IM I-BZU [0.2]
	3000	3000	3000	2000	2000
	087°	087°	087°	087°	087°
	4.2 NM	7.8 NM	3.3 NM	4.4 NM	1.3 NM
CATEGORY	A	B	C	D	E
S-ILS 8L	294/18		200 (200-½)		
S-LOC 8L	600/24	506 (600-½)	600/55	506 (600-1)	



ILS or LOC RWY 8L

SC-5, 03 DEC 2020 to 31 DEC 2020

SC-5, 03 DEC 2020 to 31 DEC 2020