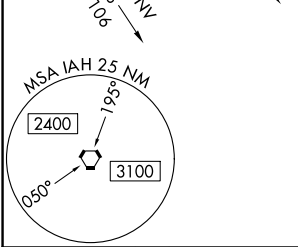
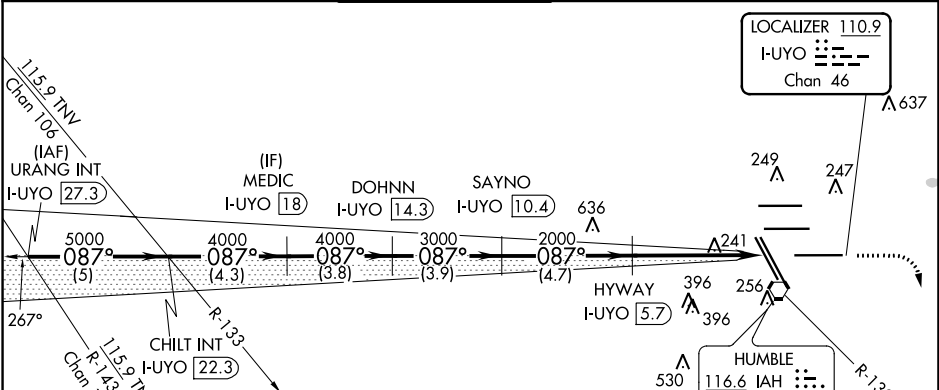


LOC/DME I-UYO 110.9 Chan 46	APP CRS 087°	Rwy Idg 10000 TDZE 90 Apt Elev 96
---	------------------------	--

ILS or LOC RWY 9
GEORGE BUSH INTERCONTINENTAL/HOUSTON (IAH)

DME required. RADAR required for procedure entry.	MALSR 	MISSED APPROACH: Climb to 580 then climbing right turn to 3000 on IAH VORTAC R-130 to JEBX/IAH 18.3 DME and hold.
Simultaneous approach authorized with Rwy 8L/R. # RVR 1800 authorized with the use of FD or AP or HUD to DA.		

D-ATIS 124.05	HOUSTON APP CON 120.05 379.1 EAST 124.35 316.15 WEST	HOUSTON TOWER 135.15 290.2	GND CON 118.575	CLNC DEL 128.1	CPDLC
-------------------------	--	--------------------------------------	---------------------------	--------------------------	-------



ELEV 96	D	TDZE 90
087° 5.8 NM from FAF		
TDZ/CL Rwy 8R, 8L, 15R, 26R, 26L, 27 and 33L		
HIRL all Rwy		
FAF to MAP 5.8 NM		
Knots	60	90 120 150 180
Min:Sec	5:48	3:52 2:54 2:19 1:56

URANG INT I-UYO 27.3	CHILT INT I-UYO 22.3	MEDIC I-UYO 18	DOHNN I-UYO 14.3	SAYNO I-UYO 10.4	HYWAY I-UYO 5.7	JEBX INT I-UYO 0.2
5000 087°	5000	4000	4000	3000 087°	2000	2000
GS 3.00° TCH 50						
VGS and ILS glidepath not coincident (VGS Angle 3.00/TCH 71).						
5 NM 4.3 NM 3.8 NM 3.9 NM 4.7 NM 4.5 NM 1.3 NM						
CATEGORY	A	B	C	D	E	
S-ILS 9 #	290/24 200 (200-1/2)					
S-LOC 9	580/24 490 (500-1/2) 580/50 490 (500-1)					