

APP CRS
267°

Rwy Idg
TDZE
Apt Elev

9402
95
96

RNAV (RNP) Y RWY 26L

GEORGE BUSH INTERCONTINENTAL/HOUSTON (IAH)

RNP AR APCH.

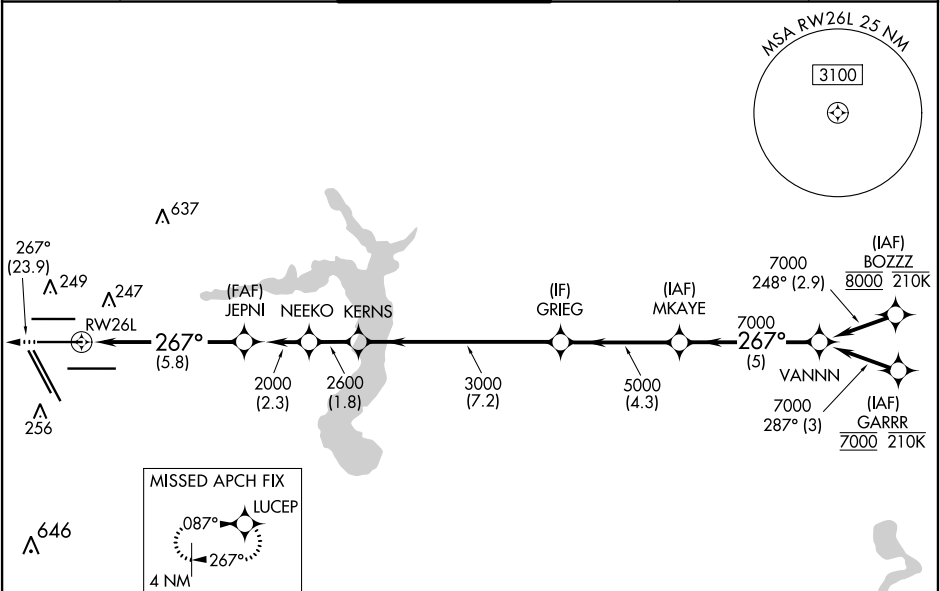
▼

For uncompensated Baro-VNAV systems, procedure NA below -3°C or above 54°C. Simultaneous approach authorized. For inop ALS, increase RNP 0.13 all Cats visibility to RVR 5100, and RNP 0.30 all Cats visibility to 1½ SM.

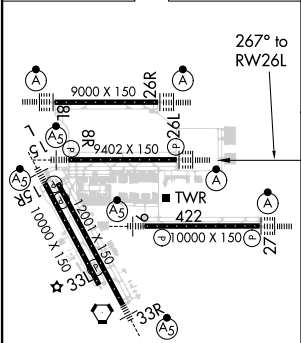
ALSF-2

MISSED APPROACH: Climb to 3000 on track 267° to LUCEP and hold.

D-ATIS 124.05	HOUSTON APP CON 120.05 379.1 EAST 124.35 316.15 WEST	HOUSTON TOWER 125.35 290.2	GND CON 118.575	CLNC DEL 128.1	CPDLC
-------------------------	--	--------------------------------------	---------------------------	--------------------------	-------



ELEV 96	D	TDZE 95
---------	----------	---------



TDZ/CL Rwy 8, 8L, 15R, 26R, 26L, 27 and 33L
HIRL all Rwy

3000 LUCEP

tr 267°

VGSI and RNAV glidepath not coincident (VGSI Angle 3.00/TCH 71).

MKAYE VANNN

GRIEG

KERNS

NEEKO

JEPNI

RWY 26L

2000

2600

3000

5000

7000

267°

GP 3.00° TCH 56

CATEGORY	A	B	C	D
RNP 0.13 DA	414/40	319 (400-¾)		
RNP 0.30 DA	549/55	454 (500-1)		

AUTHORIZATION REQUIRED