

APP CRS 267°	Rwy Idg 10000 TDZE 87 Apt Elev 96
------------------------	--

RNAV (RNP) Y RWY 27

GEORGE BUSH INTERCONTINENTAL/HOUSTON (T A H)

T

For uncompensated Baro-VNAV systems, procedure NA below -2°C (29°F) or above 54°C (130°F). GPS required. Simultaneous approach authorized. Use of FD or AP providing RNAV track guidance required during simultaneous operations.

ALSF-2

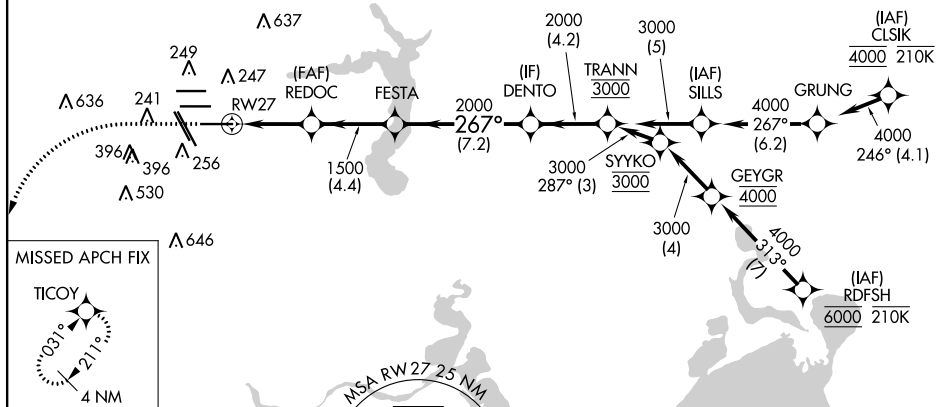


MISSED APPROACH: Climb to 560 then climbing left turn to 3000 direct TICOY and hold.

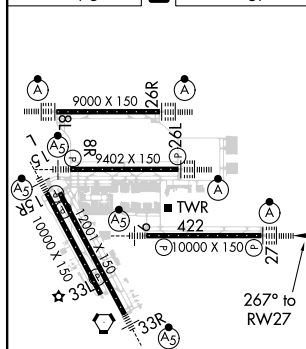
D-ATIS 124.05	HOUSTON APP CON 120.05 379.1 EAST 124.35 316.15 WEST	HOUSTON TOWER 135.15 290.2	GND CON 118.575	CLNC DEL 128.1	CPDLC
-------------------------	--	--------------------------------------	---------------------------	--------------------------	-------

²⁰⁴⁹Δ

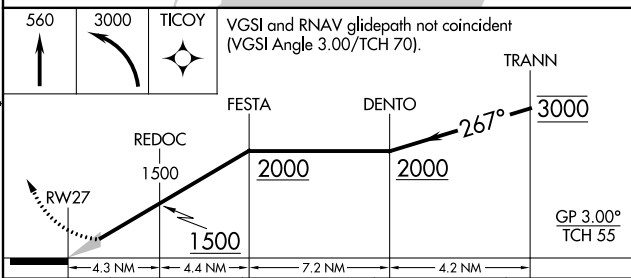
RADAR REQUIRED



ELEV	96	D	TDZE	87
------	----	----------	------	----



TDZ/CL Rwy's 8R, 8L, 15R, 26R, 26L,
27 and 33L
HIRL all Rwy's



CATEGORY	A	B	C	D
RNP 0.30 DA	389/24 302 (300-½)			

AUTHORIZATION REQUIRED

HOUSTON, TEXAS
Amdt 2A 13SEP18

GEORGE BUSH INTERCONTINENTAL/HOUSTON (IAH)
29°59'N-95°20'W **RNAV (RNP) Y RWY 27**