

APP CRS	Rwy Idg	9000
087°	TDZE	95
	Apt Elev	96

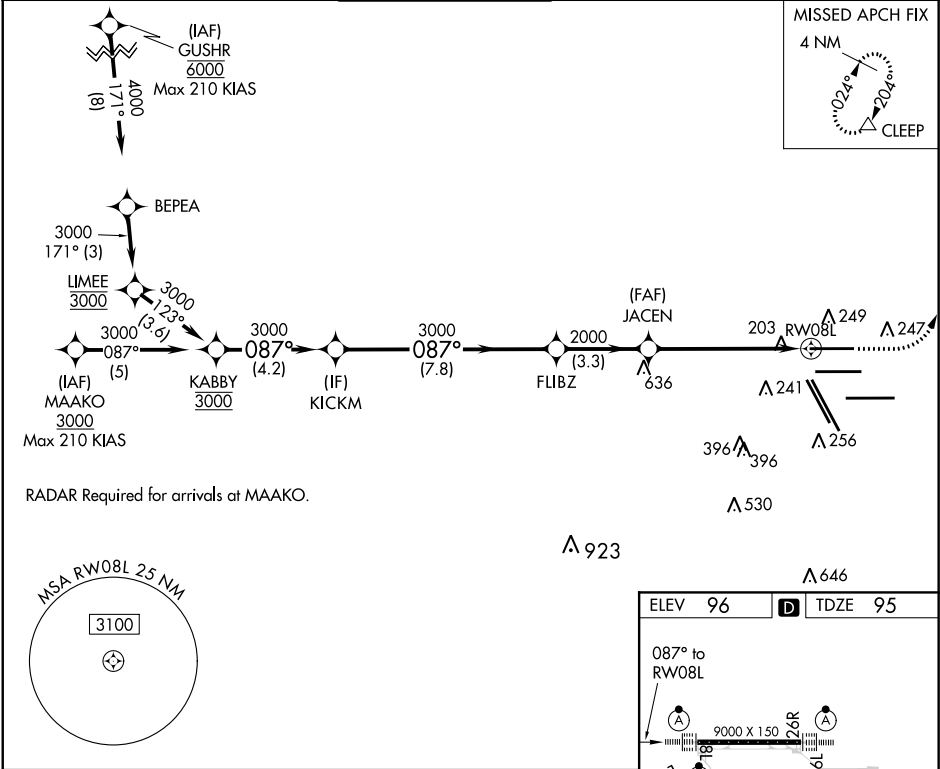
RNAV (RNP) Y RWY 8L
GEORGE BUSH INTERCONTINENTAL/HOUSTON (IAH)

GPS Required. For uncompensated Baro-VNAV systems, procedure NA below -3°C (27°F) or above 54°C (130°F). For inop ALSF-2, increase RNP 0.30 all Cats visibility to 1½ mile. Simultaneous approach authorized. Use of FD or AP providing RNAV track guidance required during simultaneous operations.

ALSF-2

MISSED APPROACH: Climb to 580 then climbing left turn to 4000 direct CLEEP and hold.

D-ATIS 124.05	HOUSTON APP CON 120.05 379.1 EAST 124.35 316.15 WEST	HOUSTON TOWER 120.72 290.2	GND CON 121.7	CLNC DEL 128.1	CPDLC
-------------------------	--	--------------------------------------	-------------------------	--------------------------	-------



GP 3.00° TCH 59

3000 087° 3000 3000 2000 3000

4.2 NM 7.8 NM 3.3 NM 5.8 NM

CATEGORY A B C D

RNP 0.30 DA 510/45 415 (500-7/8)

AUTHORIZATION REQUIRED

580 4000 CLEEP

087° to RW08L

9000 X 150 26R 26L 27 33L 33R 402 X 150 1000 X 150 1000 X 150 27

TWR 422

TDZ/CL Rws 8R, 8L, 15R, 26R, 26L, 27 and 33L

HIRL all Rws

SC-5, 03 DEC 2020 to 31 DEC 2020

SC-5, 03 DEC 2020 to 31 DEC 2020