

WAAS CH 49226 W26D	APP CRS 267°	Rwy Idg 9402 TDZE 95 Apt Elev 96
--	------------------------	---

RNAV (GPS) Z RWY 26L

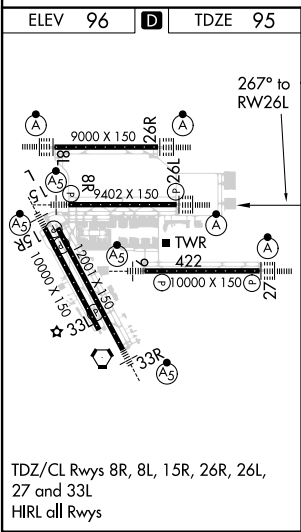
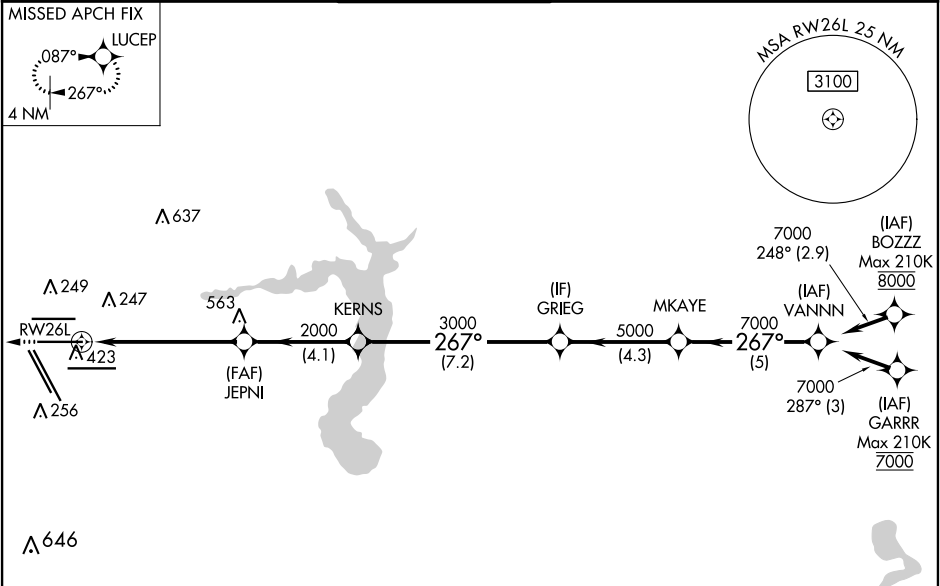
GEORGE BUSH INTERCONTINENTAL/HOUSTON (IAH)

▼ For uncompensated Baro-VNAV systems, LNAV/VNAV NA below -3°C (27°F) or above 54°C (130°F). For inop ALSF, increase LPV Cat E visibility to RVR 4000, LNAV/VNAV Cat E visibility to 1½, and LNAV Cat E visibility to 1¾. DME/DME RNP-0.3 NA. Simultaneous approach authorized with Rwy 26R and Rwy 27. LNAV procedure NA during simultaneous operations. Use of FD or AP providing RNAV track guidance required during simultaneous operations.

ALSF-2

MISSED APPROACH:
Climb to 3000 direct
LUCEP and hold.

D-ATIS 124.05	HOUSTON APP CON 120.05 379.1 EAST 124.35 316.15 WEST	HOUSTON TOWER 125.35 290.2	GND CON 118.575	CLNC DEL 128.1	CPDLC
-------------------------	--	--------------------------------------	---------------------------	--------------------------	-------



RADAR REQUIRED

3000	LUCEP	VGSI and RNAV glidepath not coincident (VGSI Angle 3.00/TCH 71).							
*LNAV only									
*1.6 NM to RW26L									
RW26L									
1.6 NM 4.2 NM 4.1 NM 7.2 NM 4.3 NM 5 NM									
CATEGORY	A	B	C	D	E				
LPV	DA	295/18		200 (200-½)					
LNAV/VNAV	DA	586/60		491 (500-1¼)					
LNAV MDA	680/24	585 (600-½)		680-1¼ 585 (600-1¼)					