

WAAS CH 72926 W09A	APP CRS 087°	Rwy Idg 10000 TDZE 91 Apt Elev 96
--	------------------------	--

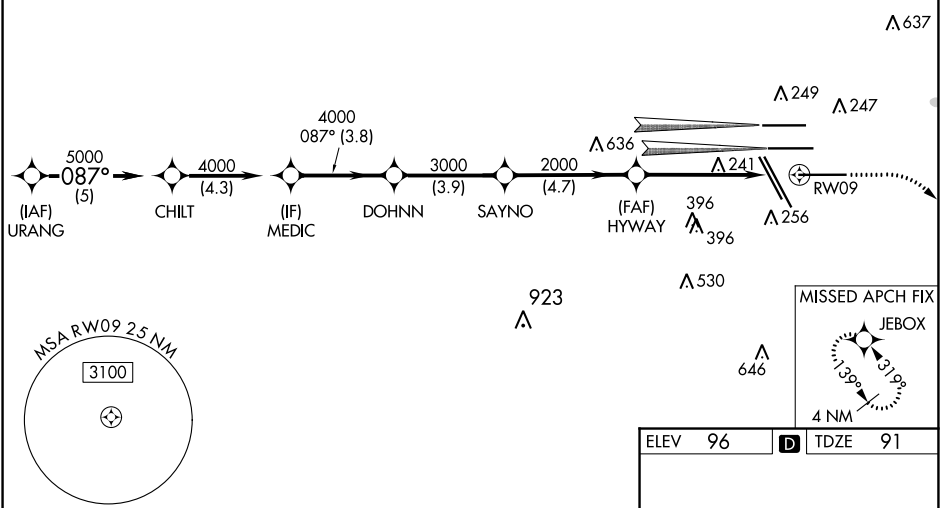
RNAV (GPS) Z RWY 9

GEORGE BUSH INTERCONTINENTAL/HOUSTON (IAH)

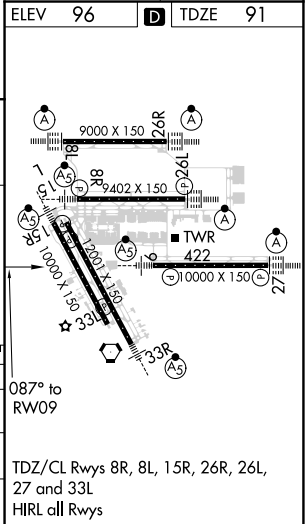
<p>▼ For uncompensated Baro-VNAV systems, LNAV/VNAV NA below -3°C (27°F) or above 54°C (130°F). For inop MALSR, increase LPV Cat E visibility to RVR 4000, LNAV/VNAV Cat E visibility to 1½ mile, and LNAV/VNAV Cat C/D/E visibility to 1¾ mile. Simultaneous approach authorized with Rwy 8L/R. DME/DME RNP-0.3 NA. LNAV procedure NA during simultaneous operations. Use of FD or AP providing RNAV track guidance required during simultaneous operations. ** RVR 1800 authorized with use of FD or AP or HUD to DA.</p>	<p>MALSR AS</p>	<p>MISSED APPROACH: Climb to 580 then climbing right turn to 3000 direct JEBOX and hold.</p>
---	---------------------	--

D-ATIS 124.05	HOUSTON APP CON 120.05 379.1 EAST 124.35 316.15 WEST	HOUSTON TOWER 135.15 290.2	GND CON 118.575	CLNC DEL 128.1	CPDLC
-------------------------	--	--------------------------------------	---------------------------	--------------------------	-------

RADAR REQUIRED



VGSI and RNAV glidepath not coincident (VGSI Angle 3.00/TCH 71).					
URANG	CHILT	MEDIC	DOHNN	SAYNO	HYWAY
5000	5000	4000	4000	3000	2000
GP 3.00°					
TCH 50					
	5 NM	4.3 NM	3.8 NM	3.9 NM	4.7 NM
CATEGORY	A	B	C	D	E
LPV DA**	291/24		200 (200-½)		
LNAV/VNAV DA	525/50		434 (500-1)		
LNAV MDA	580/24	489 (500-½)	580/50	489 (500-1)	



SC-5, 03 DEC 2020 to 31 DEC 2020

SC-5, 03 DEC 2020 to 31 DEC 2020