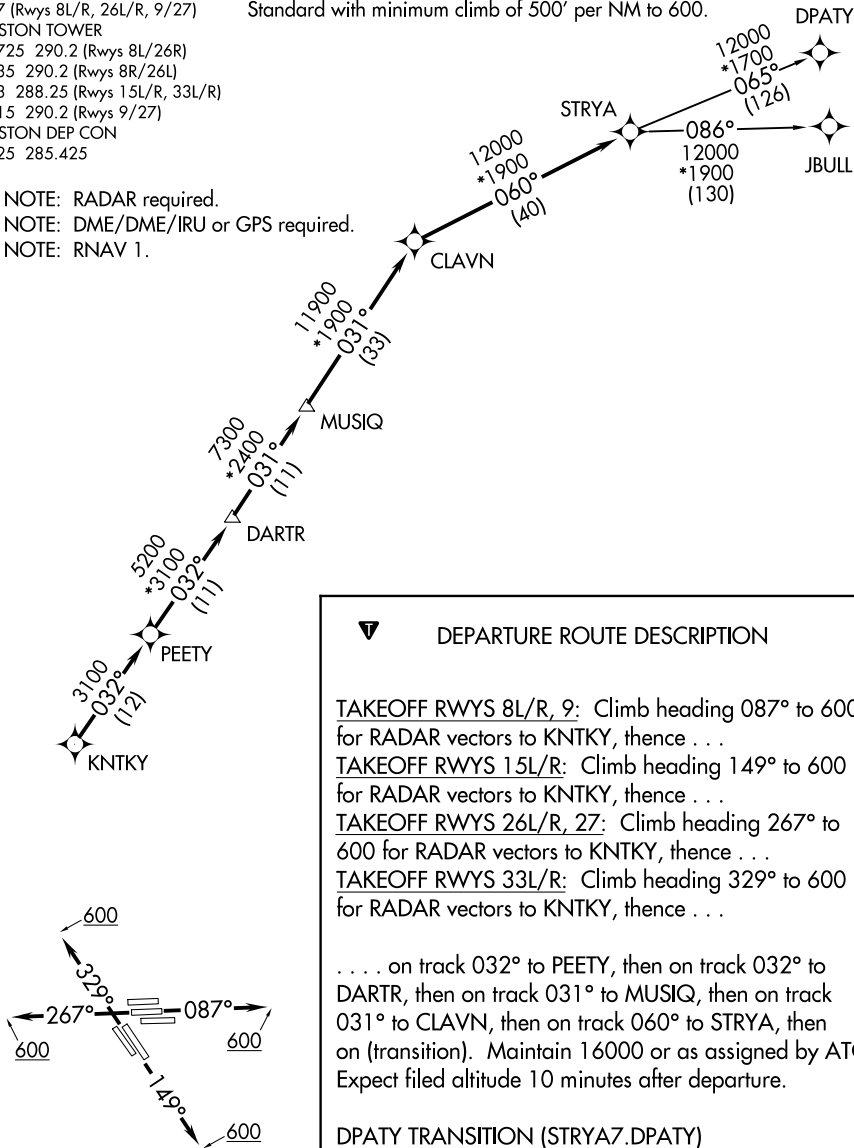


D-ATIS
124.05
CLNC DEL
128.1
CPDLC
GND CON
118.575 (Rwys 15L/R, 33L/R)
121.7 (Rwys 8L/R, 26L/R, 9/27)
HOUSTON TOWER
120.725 290.2 (Rwys 8L/26R)
125.35 290.2 (Rwys 8R/26L)
127.3 288.25 (Rwys 15L/R, 33L/R)
135.15 290.2 (Rwys 9/27)
HOUSTON DEP CON
132.25 285.425

TOP ALTITUDE:
16000

TAKEOFF MINIMUMS
Rwys 8L/R, 9, 15L/R, 26L/R, 27, 33L/R:
Standard with minimum climb of 500' per NM to 600.

NOTE: RADAR required.
NOTE: DME/DME/IRU or GPS required.
NOTE: RNAV 1.



NOTE: Chart not to scale.



DEPARTURE ROUTE DESCRIPTION

TAKEOFF RWYS 8L/R, 9: Climb heading 087° to 600 for RADAR vectors to KNTKY, thence . . .
TAKEOFF RWYS 15L/R: Climb heading 149° to 600 for RADAR vectors to KNTKY, thence . . .
TAKEOFF RWYS 26L/R, 27: Climb heading 267° to 600 for RADAR vectors to KNTKY, thence . . .
TAKEOFF RWYS 33L/R: Climb heading 329° to 600 for RADAR vectors to KNTKY, thence . . .

. . . on track 032° to PEETY, then on track 032° to DARTR, then on track 031° to MUSIQ, then on track 031° to CLAVN, then on track 060° to STRYA, then on (transition). Maintain 16000 or as assigned by ATC. Expect filed altitude 10 minutes after departure.

DPATY TRANSITION (STRYA7.DPATY)
JBULL TRANSITION (STRYA7.JBULL)