

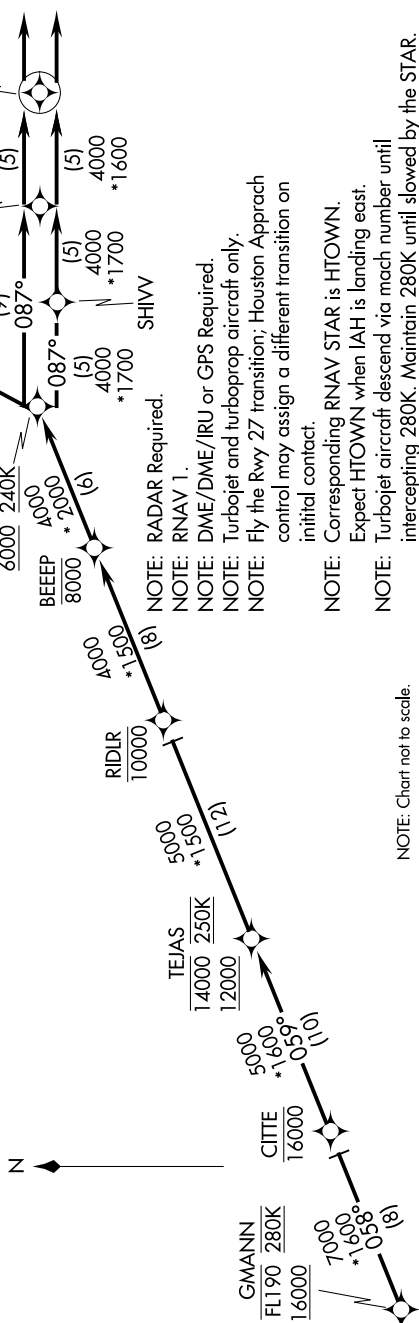
ARRIVAL ROUTE DESCRIPTION

From GMANN on track 058° to cross CITTE at or below 16000, then on track 059° to cross TEIAS at or above 12000, at or below 14000 and at 250K.

LANDING RUNWAY 26L: From TEJAS on track 059° to cross RIDIR at or below 10000, then on track 059° to cross BEEEP at or below 8000, then on track 059° to cross HOWLIE at or below 6000, then on track 087° to cross SMOCR, then on track 087° to cross PRAYY at or below 4200K, then on track 087° to cross VECTORS to final approach course. and at 210K, then on track 087°. Expect vectors to final approach course.

LANDING RUNWAY 26R: From TEJAS on track 059° to cross RIDIR at or below 10000, then on track 059° to cross BEEF at or below 8000, then on track 059° to cross HOWLIN at or below 6000 and at 240K, then on track 034° to ZOEEL, then on track 087° to cross SKLER at 6000 and at 210K, then on track 087°. Expect vectors to final approach course.

LANDING RUNWAY 27: From TEJAS on track 059° to cross RIDLR at or below 10000, then on track 059° to cross BEEEP at or below 8000, then on track 059° to cross HOWLN at 6000 and at 240K, then on track 087° to SHIVV, then on track 087° to SMOOCR, then on track 087° to cross PRAYT at 6000 and at 210K, then on track 087°. Expect vectors to final approach course.



NOTE: Chart not to scale.

SC-5, 03 DEC 2020 to 31 DEC 2020

TEJAS FOUR ARRIVAL (RNAV) Arrival Routes

HOUSTON, TEXAS

(GMANN.TEJAS4) 21JUL16

GEORGE BUSH INTERCONTINENTAL/HOUSTON (IAH)