

LOC/DME I-TXH <u>110.7</u> Chan 44	APP CRS 350°	Rwy Idg 6016 TDZE 78 Apt Elev 82
--	------------------------	---

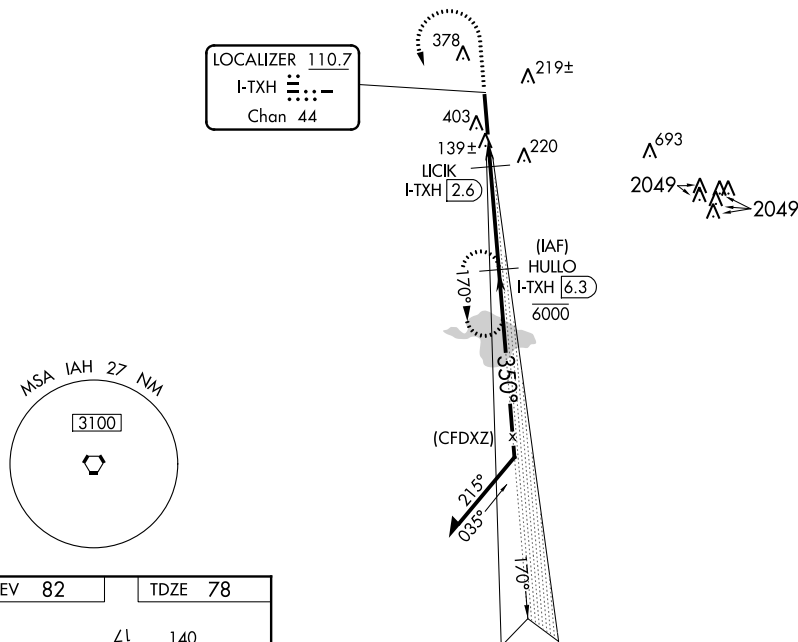
ILS or LOC RWY 35
SUGAR LAND RGNL (SGR)

DME required.
RADAR required for procedure entry.

T VDP NA when using William P Hobby altimeter setting. When local altimeter
A setting not received, use William P Hobby altimeter setting and increase all
 DA 51 feet and all MDA 60 feet and S-LOC 35 Cat C/D visibility $\frac{1}{8}$ mile,
 and Circling Cat C/D visibility $\frac{1}{4}$ mile.

MISSED APPROACH: Climb to 900 then climbing left turn to 2000 on I-TXH localizer south course to HULLO/I-TXH 6.3 DME and hold.

ATIS* 118.125	HOUSTON APP CON 123.8 257.7	SUGAR LAND TOWER* 118.65 (CTAF) 0	GND CON 121.4	CLNC DEL 121.4	CLNC DEL 119.25 (when twr closed)	UNICOM 122.95
-------------------------	---------------------------------------	---	-------------------------	--------------------------	--	-------------------------



ELEV 82 TDZE 78

ZL 140

TWR

800 X 100

P

35 350° 5.2 NM from FAF

REIL Rwy 17 and 35
HIRL Rwy 17-35

FAF to MAP 5.2 NM

	60	90	120	150	180
Knots	60	90	120	150	180
Min:Sec	5:12	3:28	2:36	2:05	1:44

