

WAAS CH 56219 W35A	APP CRS 350°	Rwy Idg TDZE 78 Apt Elev 82	6016
--	------------------------	---	-------------

RNAV (GPS) RWY 35

SUGAR LAND RGNL (SGR)

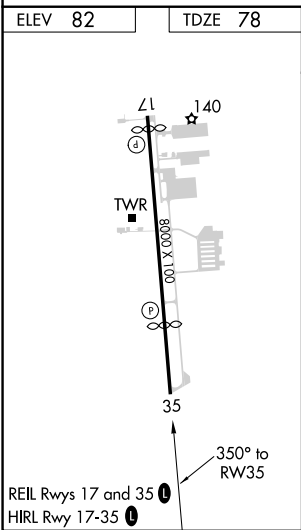
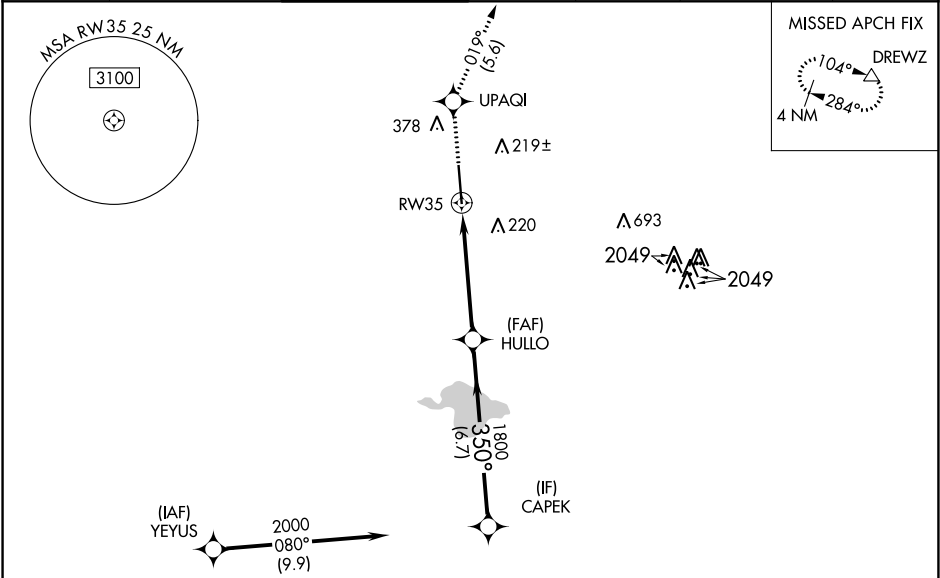
RNP APCH.

⚠

For uncompensated Baro-VNAV systems, LNAV/VNAV NA below -1.5°C (5°F) or above 43°C (109°F). Baro-VNAV and VDP NA when using William P Hobby altimeter setting. When local altimeter setting not received, use William P Hobby altimeter setting: increase all DA 51 feet; increase all MDA 60 feet and increase LNAV-VNAV all Cats visibility to 1¾, LNAV Cat C/D visibility to 1½, and Circling Cat C visibility to 2, Cat D to 2¼. When VGSI inop, Circling Rwy 17 NA at night.

MISSED APPROACH:
Climb to 2000 direct UPAQI and on track 019° to DREWZ and hold.

ATIS★ 118.125	HOUSTON APP CON 123.8 257.7	SUGAR LAND TOWER★ 118.65 (CTAF) 0	GND CON 121.4	CLNC DEL 121.4	CLNC DEL 119.25 (when twr closed)	UNICOM 122.95
-------------------------	---------------------------------------	--	-------------------------	--------------------------	--	-------------------------



RADAR REQUIRED

2000	UPAQI	DREWZ
↑	✦	tr 019°
		△

* LNAV only.

Diagram illustrating a flight path from RW35 to CAPEK. The path consists of three segments: 1.7 NM from RW35 to a point, 3.5 NM from that point to HULLO 1800, and 6.7 NM from HULLO 1800 to CAPEK 2000. The angle between the first and second segments is 350°. A dashed line indicates a 1.7 NM distance from RW35 to the first segment. A dashed line indicates a 1800 altitude at HULLO. The ground profile is shown as a solid line. A dashed line indicates a 1800 altitude at HULLO. The ground profile is shown as a solid line. A dashed line indicates a 1800 altitude at HULLO. The ground profile is shown as a solid line.

GP 3.00°
TCH 56

CATEGORY	A	B	C	D
LPV DA	278-¾ 200 (200-¾)			
LNAV/VNAV DA	567-1½ 489 (500-1½)			
LNAV MDA	660-1	582 (600-1)	660-1¾	582 (600-1¾)
CIRCLING	720-1	638 (700-1)	720-1¾ 638 (700-1¾)	720-2 638 (700-2)

SC-5, 03 DEC 2020 to 31 DEC 2020

SC-5, 03 DEC 2020 to 31 DEC 2020