

WAAS
CH **62819**
W32A

APP CRS
321°

Rwy Idg
TDZE **245**
Apt Elev **245**

RNAV (GPS) RWY 32

CONROE-NORTH HOUSTON RGNL (CXXO)

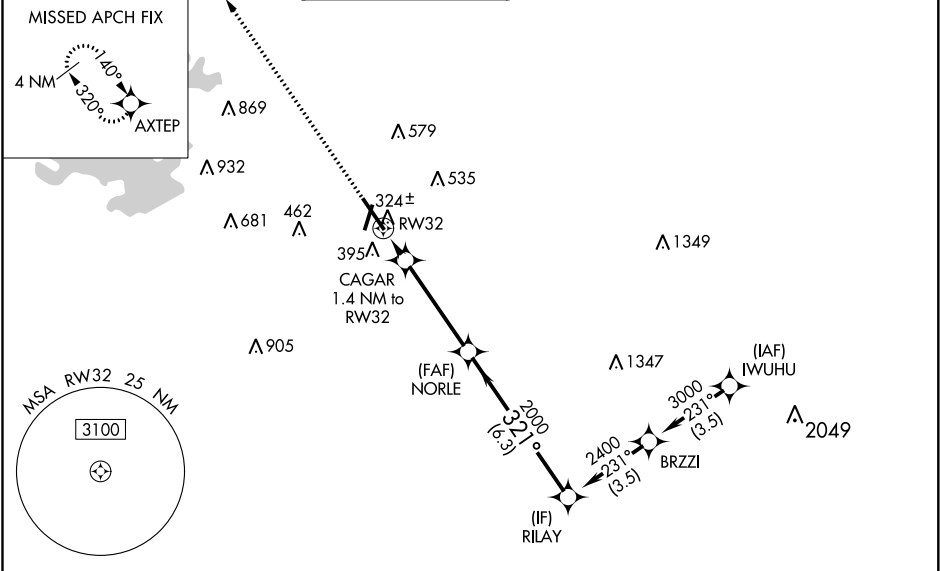
▼

▲

For uncompensated Baro-VNAV systems, LNAV/VNAV NA below -6°C (-22°F) or above 54°C (130°F). DME/DME RNP-0.3 NA.
Rwy 32 helicopter visibility reduction below ¾ SM NA.

MISSED APPROACH: Climb to 2100 direct AXTPE and hold.

ATIS 118.325	HOUSTON APP CON 119.7 281.4	CONROE TOWER ★ 124.125 (CTAF) 0	GND CON 120.45	CLNC DEL 120.45	CLNC DEL 119.55 (When twr closed)
------------------------	---------------------------------------	---	--------------------------	---------------------------	--



ELEV **245** **D** TDZE **245**

2100

AXTPE

*LNAV only.

CAGAR 1.4 NM to RW32

RW32

*720

NORLE

2000

RILAY

2400

GP 3.00° TCH 50

1.4 NM

4 NM

6.3 NM

CATEGORY	A	B	C	D
LPV DA		495-¾	250 (300-¾)	
LNAV/VNAV DA		505-⅞	260 (300-⅞)	
LNAV MDA		580-1	335 (400-1)	
C CIRCLING	700-1	455 (500-1)	880-1¾ 635 (700-1¾)	960-2¼ 715 (800-2¼)

SC-5, 03 DEC 2020 to 31 DEC 2020

SC-5, 03 DEC 2020 to 31 DEC 2020